



# Detail Lighting

## 430 Series

The 430-LED Series MIL-F-16377/17 is a solid state luminaire designed for naval berth lighting in maritime environments.

### LED

Input Power: 3.5 Watts

### Housing

Die-cast marine grade aluminum construction supplied with one DPST toggle switch. Available with receptacle or USB outlet.

### Finish

Polyester powder-coated after phosphate pre-treatment for superior adhesion and corrosion resistance.

### Wiring

With convenience outlet:

10 ft. of 7XW-3 cable with separate circuit for receptacle

With USB outlet:

10 ft. of TXW-3 cable

### Weight

With USB port: 2.75 lb.

With receptacle: 3.50 lbs

### Dimensions

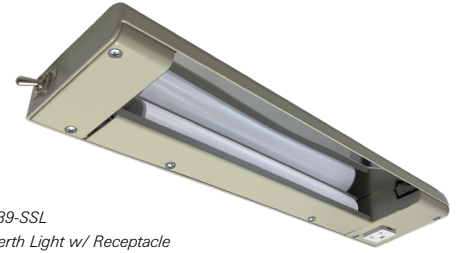
Basic fixture less mounting hardware:

16-5/8" x 4-1/16" x 1-1/2"

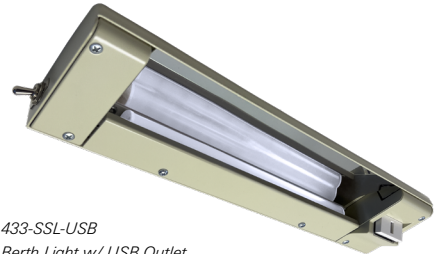
The 430-LED Series is a form, fit, function direct replacement for the legacy bunk light.

### Certification

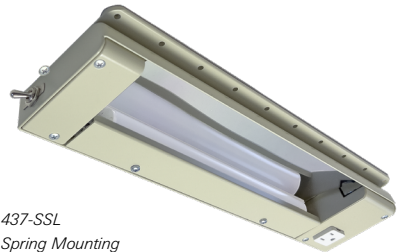
First Article Qualified



439-SSL  
Berth Light w/ Receptacle  
NSN 6210-01-603-8568



433-SSL-USB  
Berth Light w/ USB Outlet  
NSN 6210-01-617-1310



437-SSL  
Spring Mounting



### 430-SSL

Description	L.C. Doane Number	NSN
Berth Light w/ USB Outlet	433-SSL-USB	6210-01-617-1310
Berth Light w/ Spring Mount	437-SSL	
Berth Light w/ Receptacle	439-SSL	6210-01-603-8568

### Replacement Parts

Replacement Item	L.C. Doane Number	NSN
Lamp	B-603-S	6210-01-656-7716
Receptacle	B-1776-C-S	5935-01-675-2579
USB Port	B-2979-S	5935-01-656-3694
DPST Toggle Switch	B-573-CS	5930-01-656-4231

Modifications are available to meet custom requirements. Specifications and dimensions are subject to change without notice.