



PRODUCT SPECIFICATION

The USBN series is designed for ceiling surface mount cell lighting in medium, maximum and super max security detention facilities. The unique lens design maximizes fixture efficiency.

**Mounting**

Surface mounts to ceiling.

**Lens**

One piece vandal resistant prismatic polycarbonate inner lens with a one piece clear polycarbonate outer lens (if required).

**Clamshell Housing**

One piece, die-formed cold rolled steel with seams welded and ground smooth, 14 gauge lens retainers and our unique hinge-free system allowing the housing to be completely removed for ease of installation and servicing. Stainless steel available.

**Back Plate**

16 gauge die-formed cold rolled steel.

**Finish**

Polyester powder-coated after phosphate pretreatment for superior adhesion and corrosion resistance. Brushed stainless steel available.

**Hardware**

Recessed, stainless steel, tamper-proof fasteners.

**Certifications**

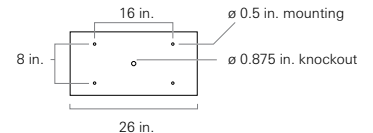
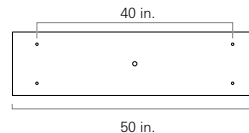
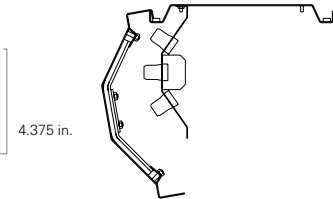
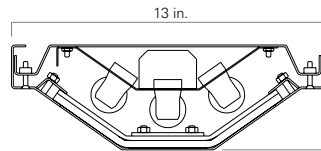
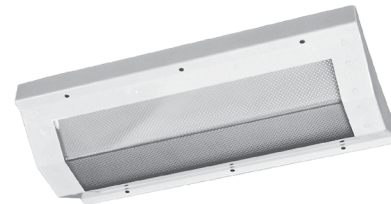
UL Listed damp location. Covered ceilings only.

Job Name \_\_\_\_\_

Fixture Type \_\_\_\_\_

Catalog No. \_\_\_\_\_

Approval \_\_\_\_\_ Date \_\_\_\_\_



one two three four five six seven eight nine ten eleven

**USBN**

**one Lamps (not included)**

- 14 2 ft. 14 W T5
- 17 2 ft. 17 W T8
- 24 2 ft. 24 W T5 HO
- 4B 2 ft. 40 W T5 RS biax
- 28 4 ft. 28 W T5
- 32 4 ft. 32 W T8
- 54 4 ft. 54 W T5 HO

**two Housing Gauge**

- N 18 gauge, minimum security
- D 16 gauge, medium security
- X 14 gauge, maximum security
- U 12 gauge, super max, CRS only

**three Housing Material**

- C Cold rolled steel
- S Stainless steel

**four Finish**

- R Brushed stainless steel
- W White

**five Voltage**

- 120 120 V, 60 Hz
- 277 277 V, 60 Hz
- 347 347 V, 60 Hz
- VAR Variable, 120-277 V, 50/60Hz

**six Ballast**

- DM Dimming
- EL Electronic Instant Start, std T8
- PR Program Rapid Start, std T5, option T8

**seven Internal Lens**

- 15 .156 in. K12 prismatic polycarbonate
- 16 .187 in. K12 prismatic polycarbonate

**eight External Lens**

- 30 .187 in. clear polycarbonate
- 32 .250 in. clear polycarbonate
- 36 .375 in. clear polycarbonate

**nine Fasteners**

- AP Stainless steel allen head with pin
- TP Stainless steel torx head with pin
- PH Phillips, non-security

**ten Electrical Access**

- A 2.250 in. diameter access hole
- K 0.875 in. diameter knockout(s), std

**eleven Options**

- 2C Two-circuit wired
- CU Canadian UL Listing
- E1 One lamp emergency ballast
- E2 Two lamp emergency ballast
- FH Fuse and holder
- NL Night light, for 7 or 9 W PL bipin
- NL-LED Night light, LED
- IMS Integral Occ Sensor

Modifications are available to meet custom requirements.