



# VSB-LED Amber

Vandal Resistant High Abuse Surface Mount **LED** Linear

## PRODUCT SPECIFICATION

For use in cleanroom and vivarium applications.

### Mounting

Surface mounts to ceilings or walls.  
Able to be pendant mounted. Please contact factory.

### Housing

Marine grade aluminum extruded housing and die-cast end caps.

### Lens Frame

Marine grade aluminum extruded side rails and die-cast ends captivates lens.

### Finish

Polyester powder-coated after phosphate pretreatment for superior adhesion and corrosion resistance.

### Lens

.125 in. thick extruded polycarbonate snap-fits into lens frame.  
Fully illuminated opal lens completely hides diode image while maintaining excellent transmission.

### Gasket

Closed cell foam gasket continuously seals lens frame to housing for up to IP67 rating.

### Hardware

Stainless steel, tamperproof fasteners finished to match housing.

### Driver

0-10Vdc 1% dimming, >0.9 PF, <20% THD  
Factory programmable, Operating temp -40°C Min. to 50°C Max

### Wiring

Driver provided with pre-wired 3-wire self-aligning input power quick disconnect and 2-wire quick disconnect to LED module.

### Certifications

UL Listed wet location. IP65 rated. Optional IP66 (NEMA4 / 4X rated) and IP67 ratings available. Constructed to pass MIL-S-901 Grade A, Type A, High Impact Shock Test and MIL-S-167 Type 1, Vibration Test. Suitable for use in Natatorium Environments.

Job Name \_\_\_\_\_

Fixture Type \_\_\_\_\_

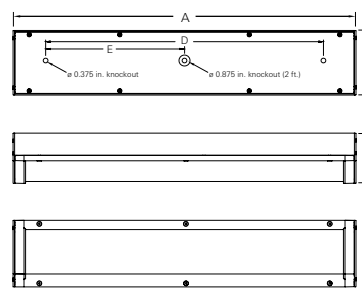
Catalog No. \_\_\_\_\_

Approval \_\_\_\_\_

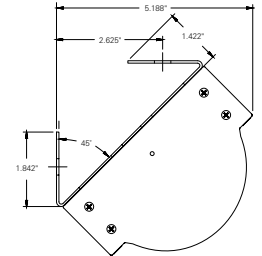
Date \_\_\_\_\_



2 ft. and 4 ft. Fixtures



Corner Mounting Option



Size	A	B	C	D	E
2 ft.	24.2"	5.0"	3.7"	18"	9"
4 ft.	48.2"	5.0"	3.7"	42"	21"



one two three four five six seven eight nine ten eleven  
VSB - / - VAR DM - OP -

### one Luminaire Size

- 2 2 ft. fixture
- 4 4 ft. fixture

### two LED Source

Refer to the LED Source Table on Page 2 for available options.

### three Color Temperature

- 30 3000K
- 35 3500K
- 40 4000K
- 50 5000K

### four CRI

- 80 80 CRI
- 90 90 CRI

### five Voltage

VAR Variable, 120-277 V, 50/60Hz

### six Driver

DM 0-10Vdc Dimming, standard

### seven Lens

OP Opal polycarbonate, standard

### eight Finish

- WH White
- BK Matte Black
- LG Light Gray
- CC Custom Color (Contact Factory)

### nine Hardware

- TP Torx head, standard
- PH Phillips head

### ten IP Rating

- 65 IP65 Rated, standard
- 66 IP66 Rated, NEMA4 / 4X Rated
- 67 IP67 Rated

### eleven Options

- AM Anti-microbial coating (exposed areas)
- CM Corner mounting bracket
- CU Canadian UL Listing
- EM\*<sup>1</sup> Emergency battery backup
- FH Fuse holder
- IMS\*<sup>2</sup> Integral Occ Sensor
- PM Pendant mount  
*Pendant supplied by others. Customer must provide mounting hole template.*
- PC Photocell
- RMxx\*<sup>3</sup> Row mounting  
*Includes Chase Nipple(s), PVC Gasket(s), and Sealing Locknut(s)*
- NS NSF listing (refer to the NSF version of this cut sheet)

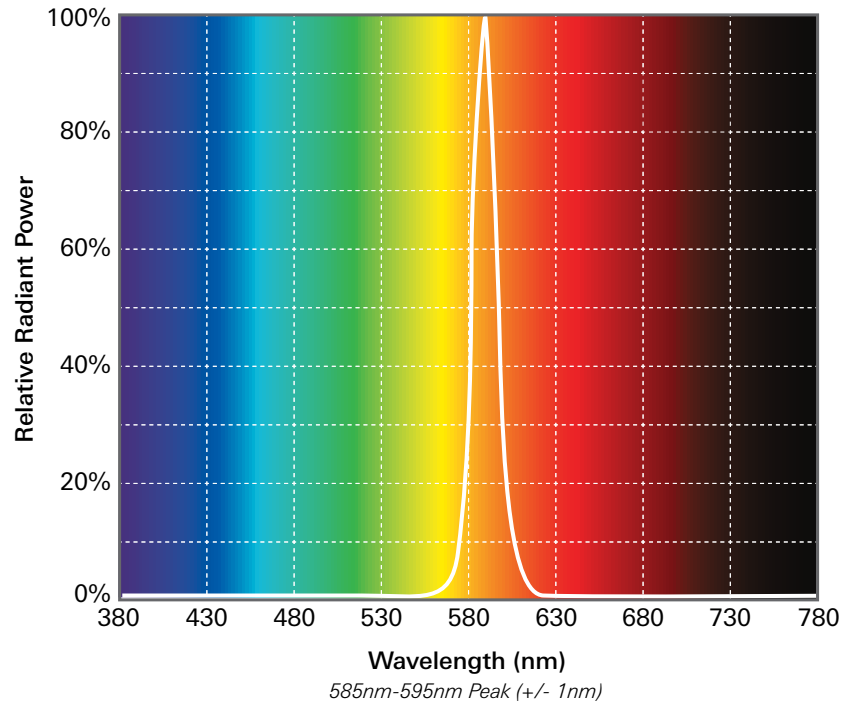
\*EM = Not available on 1 ft. fixture

\*IMS = Not available on 1 ft. fixture

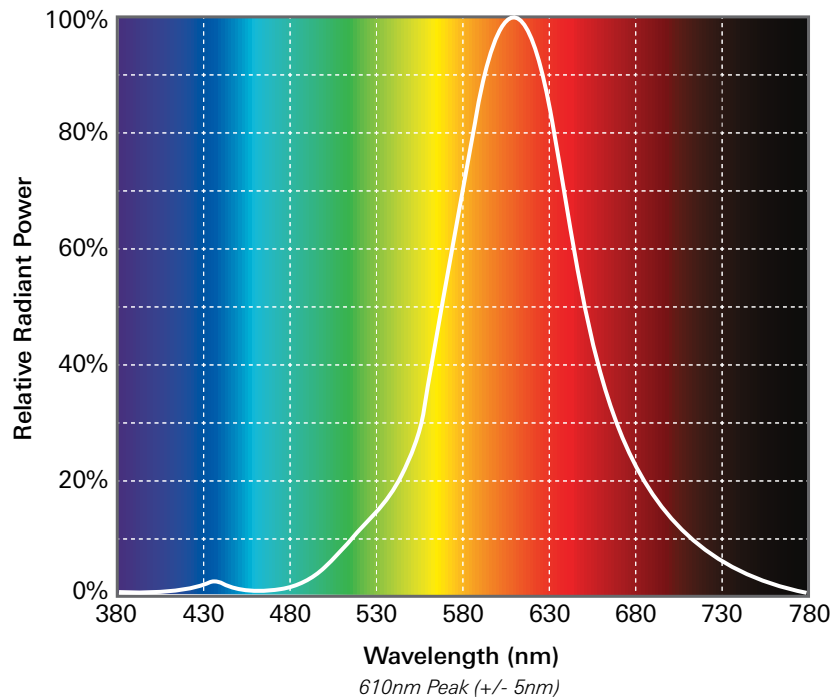
\*xx = Length of row in feet

Modifications are available to meet custom requirements. Specifications and dimensions are subject to change without notice.

**A - Pure Amber Spectrum**



**APC - Phosphor Amber Spectrum**



Modifications are available to meet custom requirements.  
Specifications and dimensions are subject to change without notice.