



PRODUCT SPECIFICATION

The USS series is designed for ceiling surface mount cell lighting in medium, maximum and super max security detention facilities.

Mounting

Surface mounts to ceiling.

Clamshell Housing

One piece, die-formed cold rolled steel with seams welded and ground smooth, 14 gauge lens retainers and a full length, welded pin piano hinge. Stainless steel available.

Back Plate

16 gauge die-formed cold rolled steel with embossed mounting holes to create a contraband drop slot / irretrievable blade trap.

Internal Lens

Optic Plus lens (standard) completely hides diode image while providing minimum 95% light transmission.

Finish

Polyester powder-coated after phosphate pretreatment for superior adhesion and corrosion resistance. Brushed stainless steel available.

Hardware

Recessed, stainless steel, tamper-proof fasteners.

Driver

0-10Vdc dimming, Range 1%-100%
-40°C Min. starting temperature, >0.9 PF, <20% THD.

Wiring

Driver provided with pre-wired 3-wire self-aligning input power quick disconnect and 2-wire quick disconnect to LED module.

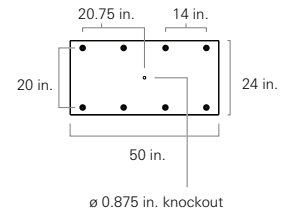
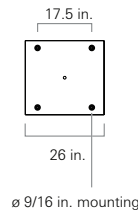
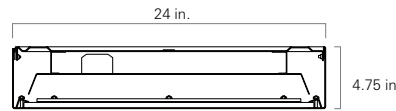
Job Name _____

Fixture Type _____

Catalog No. _____

Approval _____

Date _____



Certifications

UL Listed damp or wet location. IP34 rated. Covered ceilings only.



USS	one	two	three	four	five	six	seven	eight	nine	ten	eleven	twelve	thirteen	fourteen
-----	-----	-----	-------	------	------	-----	-------	-------	------	-----	--------	--------	----------	----------

one	Luminaire Size
2	2 ft fixture
4	4 ft fixture

two	LED Rows
2L	Two
3L	Three
4L	Four

three	Color Temperature
30	3000K
35	3500K
40	4000K
50	5000K

four	Housing Gauge
N	18 gauge, minimum security
D	16 gauge, medium security
X	14 gauge, maximum security
U	12 gauge, super max, <u>CRS only</u>

five	Housing Material
C	Cold rolled steel
S	Stainless steel

six	Finish
R	Brushed stainless steel
W	White

seven	Voltage
120	120 V, 60 Hz
277	277 V, 60 Hz
VAR	Variable, 120-277 V, 50/60Hz

eight	Driver
DM	0-10Vdc Dimming, <u>standard</u>

nine	Internal Lens
122	Optic Plus LED diffusing acrylic lens, <u>std</u>
53	.125 in. K12 prismatic acrylic
12	.125 in K12 prismatic polycarbonate
15	.156 in. K12 prismatic polycarbonate
16	.187 in. K12 prismatic polycarbonate
75	.156 in. C73 prismatic tempered glass

ten	External Lens
30	.187 in. clear polycarbonate
32	.250 in. clear polycarbonate
36	.375 in. clear polycarbonate
38	.500 in. clear polycarbonate
90	.187 in. clear tempered glass
92	.250 in. clear tempered glass
96	.375 in. clear tempered glass

eleven	Door Fasteners
AP	Stainless steel allen head with pin
TP	Stainless steel torx head with pin
PH	Phillips head, non-security

twelve	Electrical Access
A	2.250 in. diameter access hole
K	0.875 in. diameter knockout(s), <u>std</u>

thirteen	UL Listing
D	Damp Location
W	Wet Location

fourteen	Options
SO	Specified output*
2C	Two-circuit wired
CU	Canadian UL Listing
EM	Emergency battery backup
FH	Fuse and holder
NL-LED	Night light, LED
IMS	Integral Occ Sensor

* Indicated as SO(xx/xxxx). Specified output, Input watts / delivered lumens to be determined based on specified requirements

Modifications are available to meet custom requirements.