



USBN-LED

Correctional Maximum Security **LED** Surface Mount Ceiling

PRODUCT SPECIFICATION

The USB series is designed for ceiling surface mount cell lighting in medium, maximum and super max security detention facilities. The unique lens design maximizes fixture efficiency.

Mounting

Surface mounts to ceiling.

Clamshell Housing

One piece, die-formed cold rolled steel with seams welded and ground smooth with 14 gauge lens retainers. Our unique hinge-free system allows the housing to be completely removed for ease of installation and servicing. This feature also allows the door to be hinged from either side of backplate. Stainless steel available.

Back Plate

16 gauge die-formed cold rolled steel with embossed mounting holes to create a contraband drop slot / irretrievable blade trap. Stainless steel available.

Internal Lens

One piece vandal resistant opal polycarbonate inner lens (standard) with a one piece clear polycarbonate outer lens (if required). Prismatic polycarbonate inner lens optional.

Finish

Polyester powder-coated after phosphate pretreatment for superior adhesion and corrosion resistance. Brushed stainless steel available.

Hardware

Recessed, stainless steel, tamper-proof fasteners.

Driver

0-10Vdc 1% dimming, >0.9 PF, <20% THD
Factory programmable, Operating temp -40°C Min. to 50°C Max

Wiring

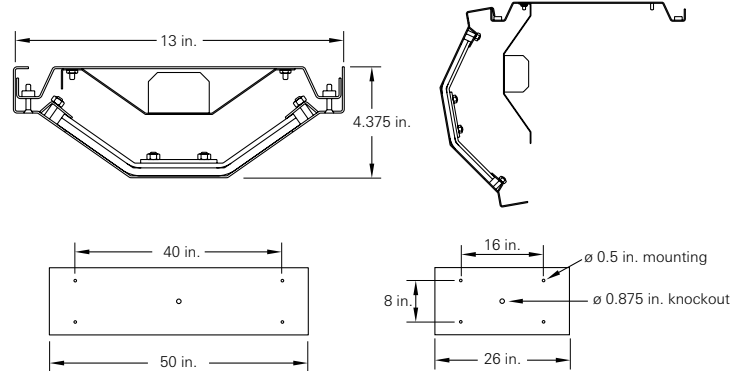
Driver provided with pre-wired 3-wire self-aligning input power quick disconnect and 2-wire quick disconnect to LED module.

Job Name _____

Fixture Type _____

Catalog No. _____

Approval _____ Date _____



Certifications

UL Listed damp location. IP44 rated. Covered ceilings only.



one two three four five six seven eight nine ten eleven twelve thirteen fourteen
USBN - 3L / - DM - / - -

<p>one Luminaire Size 2 2 ft fixture 4 4 ft fixture</p> <p>two LED Rows 3L Three</p> <p>three Color Temperature 30 3000K 35 3500K 40 4000K 50 5000K</p> <p>four CRI 80 80 CRI 90 90 CRI</p> <p>five Housing Gauge N 18 gauge, minimum security D 16 gauge, medium security X 14 gauge, maximum security U 12 gauge, super max, <u>CRS only</u></p>	<p>six Housing Material C Cold rolled steel S Stainless steel</p> <p>seven Finish R Brushed stainless steel W White</p> <p>eight Voltage VAR Variable, 120-277 V, 50/60Hz 347 347VAC, 60Hz</p> <p>nine Driver DM 0-10Vdc Dimming, <u>standard</u></p> <p>ten Internal Lens 130 .118 Opal polycarbonate, <u>standard</u> 15 .156 in. prismatic polycarbonate 16 .187 in. prismatic polycarbonate</p> <p>eleven External Lens 30 .187 in. clear polycarbonate 32 .250 in. clear polycarbonate 36 .375 in. clear polycarbonate</p>	<p>twelve Fasteners AP Stainless steel allen head with pin TP Stainless steel torx head with pin PH Phillips, non-security</p> <p>thirteen Electrical Access A 2.250 in. diameter access hole K 0.875 in. diameter knockout(s), <u>std</u></p> <p>fourteen Options SO Specified output* 2C Two-circuit wired CU Canadian UL Listing EM Emergency battery backup FH Fuse and holder IMS Integral Occ Sensor NL-LED Night light, LED (Amber available) <i>5-100% Adjustability</i></p> <p>* Indicated as SO(xx/xxxx). Specified output, Input watts / delivered lumens to be determined based on specified requirements.</p>
---	---	---

Modifications are available to meet custom requirements. Specifications and dimensions are subject to change without notice.