



SH-LED

Maximum Security Surface Mount **LED** Wall

PRODUCT SPECIFICATION

The SH series is designed for wall mount direct / indirect cell lighting in medium, maximum and super max security detention facilities.

Mounting

Surface mounts to wall.

Clamshell Housing

One piece, die-formed cold rolled steel with seams welded and ground smooth, 14 gauge lens retainers and a full length, welded pin piano hinge. Stainless steel available.

Back Plate

16 gauge die-formed cold rolled steel with embossed mounting holes to create a contraband drop slot / irretrievable blade trap.

Internal Lens

Optic Plus lens (standard) completely hides diode image while providing minimum 95% light transmission.

Finish

Polyester powder-coated after phosphate pretreatment for superior adhesion and corrosion resistance. Brushed stainless steel available.

Hardware

Recessed, stainless steel, tamper-proof fasteners.

Driver

0-10Vdc dimming, Range 1%-100%
-40°C Min. starting temperature, >0.9 PF, <20% THD.

Wiring

Driver provided with pre-wired 3-wire self-aligning input power quick disconnect and 2-wire quick disconnect to LED module.

Certifications

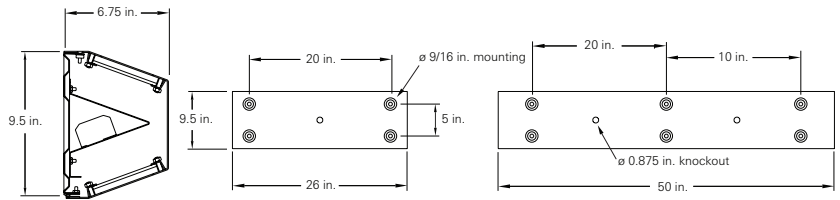
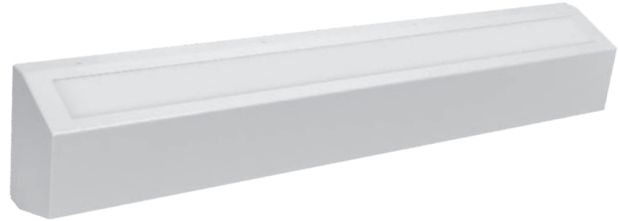
UL Listed damp or wet location. IP34 rated. Covered ceilings only.

Job Name _____

Fixture Type _____

Catalog No. _____

Approval _____ Date _____



Lumen Data / 2-ft Row	Lumen Data / 4-ft Row
2585 lumens at 28 watts per row	5175 lumens at 57 watts per row



SH - / - - - / - - - -

one two three four five six seven eight nine ten eleven twelve thirteen fourteen fifteen

one Luminaire Size
2 2 ft fixture
4 4 ft fixture

seven Finish
R Brushed stainless steel
W White

twelve Door Fasteners
AP Stainless steel allen head with pin
TP Stainless steel torx head with pin
PH Phillips, non-security

two Uplight LED Rows
1L One
2L Two

eight Voltage
120 120 V, 60 Hz
277 277 V, 60 Hz
VAR Variable, 120-277 V, 50/60Hz

thirteen Electrical Access
A 2.250 in. diameter access hole
K 0.875 in. diameter knockout(s), std

three Downlight LED Rows
1L One
2L Two

nine Driver
DM 0-10Vdc Dimming, standard

fourteen UL Listing
D Damp Location
W Wet Location

four Color Temperature
30 3000K
35 3500K
40 4000K
50 5000K

ten Internal Lens
122 Optic Plus LED diffusing acrylic lens, std
53 .125 in. K12 prismatic acrylic
12 .125 in K12 prismatic polycarbonate
15 .156 in. K12 prismatic polycarbonate
16 .187 in. K12 prismatic polycarbonate
75 .156 in. C73 prismatic tempered glass

fifteen Options
SO Specified output*
2C Two-circuit wired
CU Canadian UL Listing
EM Emergency battery backup
FH Fuse and holder
NL-LED Night light, LED (Amber available)
5-100% Adjustability
IMS Integral Occ Sensor
PS Security push on/off switch

five Housing Gauge
N 18 gauge, minimum security
D 16 gauge, medium security
X 14 gauge, maximum security
U 12 gauge, super max, CRS only

eleven External Lens
30 .187 in. clear polycarbonate
32 .250 in. clear polycarbonate
36 .375 in. clear polycarbonate
38 .500 in. clear polycarbonate
90 .187 in. clear tempered glass
92 .250 in. clear tempered glass
96 .375 in. clear tempered glass

six Housing Material
C Cold rolled steel
S Stainless steel

* Indicated as SO(xx/xxxx). Specified output, Input watts / delivered lumens to be determined based on specified requirements

Modifications are available to meet custom requirements. Specifications and dimensions are subject to change without notice.