



PRODUCT SPECIFICATION

The SGB series with built in shelf is designed for use in all levels of security facilities and high abuse applications.

Mounting

Surface mounts to wall.

Housing

Die-formed cold rolled steel with seams welded and ground smooth. Stainless steel available.

Door

One piece, die-formed cold rolled steel door with 14 gauge lens retainers and a full length welded pin piano hinge. Stainless steel available.

Finish

Polyester powder-coated after phosphate pre-treatment for superior adhesion and corrosion resistance. Brushed stainless steel available.

Hardware

Recessed, stainless steel, tamper-proof fasteners.

Wiring

All electrical components are reflector-mounted for easy wiring and maintenance.

Certifications

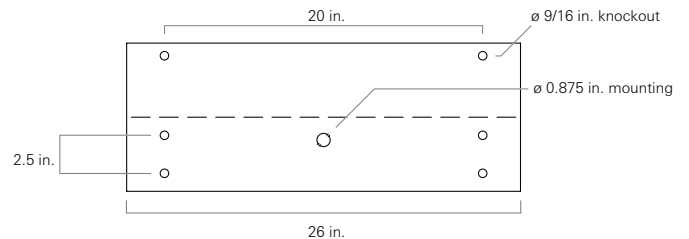
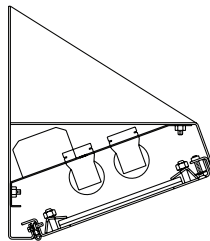
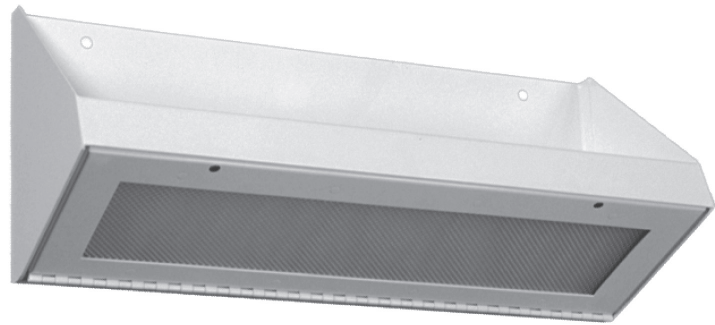
UL Listed damp or wet location. Covered ceilings only.

Job Name _____

Fixture Type _____

Catalog No. _____

Approval _____ Date _____



SGB	one	two	-	three	four	five	-	six	seven	-	eight	/	nine	-	ten	eleven	-	twelve
-----	-----	-----	---	-------	------	------	---	-----	-------	---	-------	---	------	---	-----	--------	---	--------

- one Lamps (not included)**
 - 14 2 ft. 14 W T5
 - 17 2 ft. 17 W T8
 - 24 2 ft. 24 W T5 HO
 - 4B 2 ft. 40 W T5 biax
- two Lamp Quantity**
 - 1 one
 - 2 two
- three Material Gauge**
 - N 18 gauge, minimum security
 - D 16 gauge, medium security
 - X 14 gauge, maximum security
- four Material**
 - C Cold rolled steel
 - S Stainless steel
- five Finish**
 - R Brushed stainless steel
 - W White
- six Voltage**
 - 120 120 V, 60 Hz
 - 277 277 V, 60 Hz
 - 347 347 V, 60 Hz
 - VAR Variable, 120-277 V, 50/60Hz

- seven Ballast**
 - DM Dimming
 - HO Electronic Instant Start, std T8
 - PR Program Rapid Start, std T5, option T8
- eight Internal Lens**
 - 53 .125 in. K12 prismatic acrylic
 - 12 .125 in. K12 prismatic polycarbonate
 - 15 .156 in. K12 prismatic polycarbonate
 - 16 .187 in. K12 prismatic polycarbonate
 - 75 .156 in. C73 prismatic tempered glass
 - 01 .005 in. UV absorbing overlay
- nine External Lens**
 - 30 .187 in. clear polycarbonate
 - 32 .250 in. clear polycarbonate
 - 36 .375 in. clear polycarbonate
 - 38 .500 in. clear polycarbonate
 - 90 .187 in. clear tempered glass
 - 92 .250 in. clear tempered glass
 - 96 .375 in. clear tempered glass

- ten Door Fasteners**
 - AP Stainless steel allen head with pin
 - TP Stainless steel torx head with pin
 - PH Phillips, non-security
- eleven UL Listing**
 - D Damp Location
 - W Wet Location
- twelve Options**
 - 2C Two-circuit wired
 - CU Canadian UL Listing
 - E1 One lamp emergency ballast
 - E2 Two lamp emergency ballast
 - FH Fuse and holder
 - NL Night light, for 7 or 9 W PL bipin
 - NL-LED Night light, LED
 - IMS Integral Occ Sensor
 - PS Security push on/off switch

Modifications are available to meet custom requirements.