



RXR-LED Green

Cleanroom LED Grid / Flange 15/16 to 1.5 in. T Grid

PRODUCT SPECIFICATION

For use in cleanroom vivarium applications.

Mounting

Suitable for installation in recessed 15/16"-1.5" T-Grid or hard ceiling applications. Hard ceiling (flange) type mounts via swing arm brackets that extend and clamp with a single screw action. Swing arm bracket also serves as connection for earthquake cables.

Housing

18 gauge cold rolled steel die-formed to shape with seams welded, ground smooth, and caulked airtight. Aluminum and 304 stainless steel available.

Door

One-piece 18 gauge cold rolled steel, gasketed and sealed overlapping door. Freedom Hinge™ design permits removal and hinging from either side. Aluminum and 304 stainless steel available.

Lens

Optic Plus lens (standard) completely hides diode image while providing greater than 90% light transmission.

Finish

Polyester powder-coated after phosphate pretreatment for superior adhesion and corrosion resistance. Brushed stainless steel available.

Hardware

Stainless steel fasteners

Driver

0-10Vdc 1% dimming, >0.9 PF, <20% THD
Factory programmable, Operating temp -40°C Min. to 50°C Max

Wiring

Driver provided with pre-wired 3-wire self-aligning input power quick disconnect and 2-wire quick disconnect to LED module.

Certifications

UL Listed wet location. IC, IP66, and NEMA4 / 4X Rated.
Suitable for use in ISO-3 clean rooms (209E Class 1).
USP 797 and USP 800 compliant.

Job Name _____

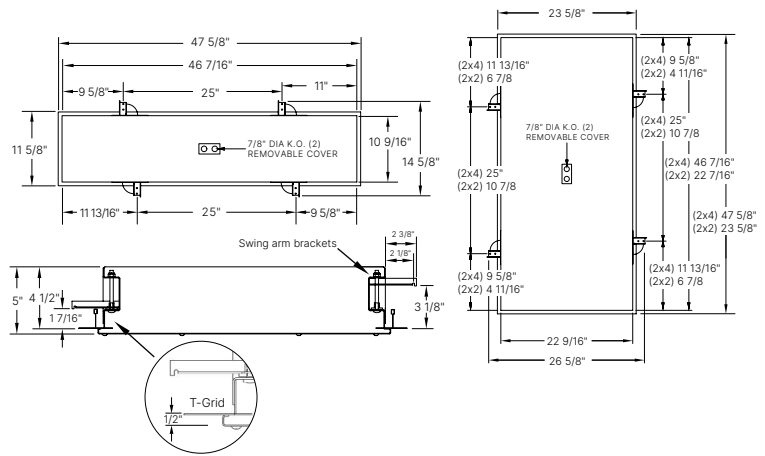
Fixture Type _____

Catalog No. _____

Approval _____ Date _____



Ceiling Grid / Flange Design



one two three four five six seven eight nine ten eleven

RXR

one Luminaire Size

- 14 1 x 4, three rows max
- 22 2 x 2
- 24 2 x 4

two LED Source

Refer to the LED Source Table on Page 2 for available options.

three Color Temperature

- 30 3000K
 - 35 3500K
 - 40 4000K
 - 50 5000K
- Leave blank for GREEN-LED only.

four CRI

- 80 80 CRI
- 90 90 CRI

five Door Material

- A Aluminum
- C Cold rolled steel, standard
- S 304 Stainless steel

six Door Finish

- R Brushed (Stainless steel only)
- W White, standard

seven Voltage

- VAR Variable, 120-277 V, 50/60Hz

eight Driver

- DM 0-10VDC Dimming

nine Internal Lens

- 122 Optic Plus LED diffusing acrylic, standard
- 122R Optic Plus with RF grid, Must be used with RF filter*
- 130 .125 in. LED diffusing Lexan

ten External Lens

- 00 No external lens
- 33 .125 in. clear polycarbonate

eleven Options

- 2C Two circuit wired
- AM Anti-microbial coating (exposed areas)
- CU Canadian UL Listing
- CP CCEA Chicago
- EM Emergency battery backup
- FH Fuse and holder
- IMS Integral Occ Sensor
- NL-LED Night light, LED
- PF Plaster frame
- RF Radio interference filter, one per circuit*
- TP Stainless steel torx head fasteners w/ pin

Housing Material

- AH Aluminum
- SH 304 Stainless steel

Modifications are available to meet custom requirements. Specifications and dimensions are subject to change without notice.