



PRODUCT SPECIFICATION

Cleanrooms, laboratories, research facilities, vivariums, natatoriums

Mounting

Mounts recessed in 2-in. T-grid ceiling. Knockouts for earthquake cable supports provided.

Housing

18 gauge cold rolled steel die-formed to shape with seams welded, ground smooth, and caulked airtight.

Door

One-piece 18 gauge cold rolled steel, gasketed and sealed overlapping door. Freedom Hinge™ design permits removal and hinging from either side. Aluminum and stainless steel available.

Lens

K12 prismatic lens installed smooth-side out towards the environment.

Finish

Polyester powder-coated after phosphate pretreatment for superior adhesion and corrosion resistance. Brushed stainless steel door available.

Hardware

Recessed stainless steel fasteners.

Certifications

UL Listed wet location. Suitable for use in ISO 5 cleanrooms (209E Class 100).

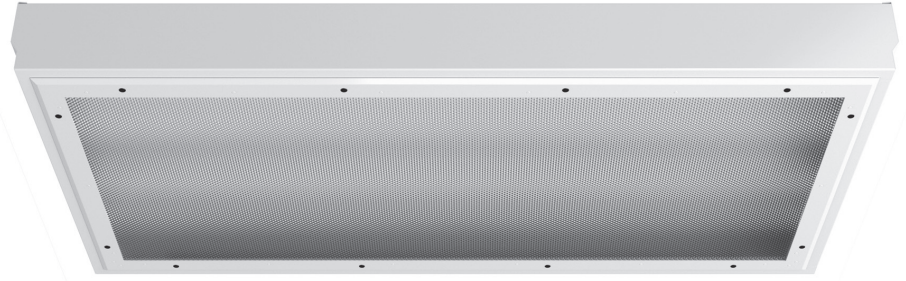
Job Name _____

Fixture Type _____

Catalog No. _____

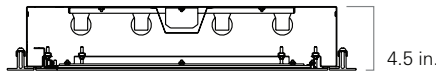
Approval _____

Date _____

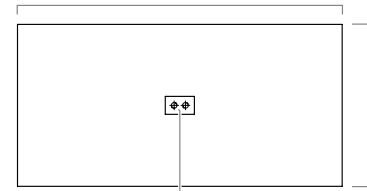


24 in. with 2 ft. lamps

48 in. with 4 ft. lamps



4.5 in.



RXA1
11.125 in.

RXA2
23.125 in.

ø 0.875 in. knockout



one Luminaire Width

- 1 1 ft.
- 2 2 ft.

two Lamp Quantity

- 2 two
- 4 four
- 6 six

three Lamps (not included)

- 14 2 ft. 14 W T5
- 17 2 ft. 17 W T8
- 24 2 ft. 24 W T5 HO
- 4B 2 ft. 40 W T5 biax
- 28 4 ft. 28 W T5
- 32 4 ft. 32 W T8
- 54 4 ft. 54 W T5 HO

There are some limitations to the lamping for 1x4 fixtures. Please consult factory for lamping availability.

four Ballast

- DM Dimming
 - EL Electronic Instant Start, std T8
 - PR Program Rapid Start, std T5, option T8
- #### five Voltage
- 120 120 V, 60 Hz
 - 277 277 V, 60 Hz
 - 347 347 V, 60 Hz
 - VAR Variable, 120-277 V, 50/60Hz

six Door Material

- A Aluminum
- C Cold rolled steel (Standard)
- S Stainless steel

seven Door Finish

- R Brushed stainless steel
- W White

eight Lens

- 12 .125 in. K12 prismatic polycarbonate
- 15 .156 in. K12 prismatic polycarbonate
- 53 .125 in. K12 prismatic acrylic
- 113 .125 in. K12 prismatic acrylic with RFI Grid

nine Options

- CU Canadian UL Listing
- E1 One lamp emergency ballast
- E2 Two lamp emergency ballast
- FH Fuse and holder
- RI Radio interference filter, one per circuit
- AH Painted aluminum housing
- SH Painted stainless steel housing
- SB Brushed stainless steel housing
- TP Stainless steel torx head fasteners
- NL Night light, for 7 W or 9 W PL bipin
- NL-LED Night light, LED

Modifications are available to meet custom requirements.