



# RXA-LED

Cleanroom **LED** Recessed Mount 2 in. T-grid

## PRODUCT SPECIFICATION

Cleanrooms, laboratories, research facilities, vivariums, natatoriums

### Mounting

Mounts recessed in 2-in. T-grid ceiling. Knockouts for earthquake cable supports provided.

### Housing

18 gauge cold rolled steel die-formed to shape with seams welded, ground smooth, and caulked airtight.

### Door

One-piece 18 gauge cold rolled steel, gasketed and sealed overlapping door. Freedom Hinge™ design permits removal and hinging from either side. Aluminum and stainless steel available.

### Lens

Optic Plus lens (standard) completely hides diode image while providing minimum 95% light transmission.

### Finish

Polyester powder-coated after phosphate pretreatment for superior adhesion and corrosion resistance. Brushed stainless steel door available.

### Hardware

Recessed stainless steel fasteners.

### Driver

0-10Vdc dimming, Range 1%-100%  
-40°C Min. starting temperature, >0.9 PF, <20% THD

### Wiring

Driver provided with pre-wired 3-wire self-aligning input power quick disconnect and 2-wire quick disconnect to LED module.

### Certifications

UL Listed wet location and IP65 rated. Suitable for use in ISO-3 cleanrooms (209E Class 1).

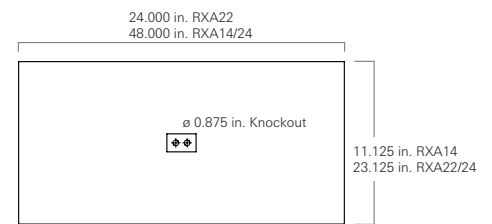
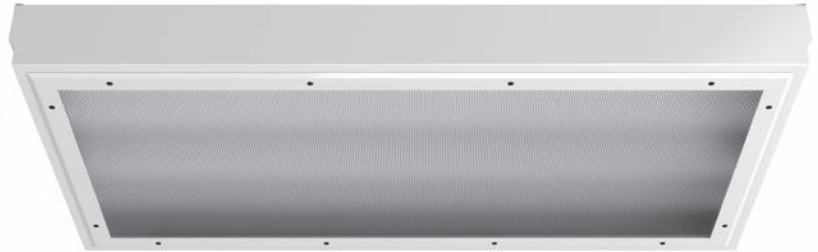


Job Name \_\_\_\_\_

Fixture Type \_\_\_\_\_

Catalog No. \_\_\_\_\_

Approval \_\_\_\_\_ Date \_\_\_\_\_



**Door Dimensions**  
45.750 x 9.750 in. (1x4 ft. Fixture)  
21.750 x 21.750 in. (2x2 ft. Fixture)  
45.750 x 21.750 in. (2x4 ft. Fixture)



**one Luminaire Size**  
14 1 x 4 - three rows max  
22 2 x 2  
24 2 x 4

**two LED Source**  
Refer to the LED Source Table on Page 2 for available options.

**three Color Temperature**  
30 3000K  
35 3500K  
40 4000K  
50 5000K

**four Door Material**  
C Cold rolled steel  
S Stainless steel  
A Aluminum

**five Finish**  
R Brushed stainless steel  
W White

**six Voltage**  
120 120 V  
277 277 V  
VAR Variable, 120-277V, 50/60Hz

**seven Driver**  
DM 0-10VDC Dimming, standard

**eight Internal Lens**  
122 Optic Plus LED diffusing acrylic lens, std

**nine External Lens**  
00 No external lens  
33 .125 in. clear polycarbonate lens

**ten Options**  
CU Canadian UL Listing  
EM Emergency battery backup  
FH Fuse and holder  
RF Radio interference filter, one per circuit  
AH Painted aluminum housing  
SH Painted stainless steel housing  
SB Brushed stainless steel housing  
AM Anti-microbial coating (exposed areas)  
TP Stainless steel torx head fasteners  
NL-LED Night light, LED  
IMS Integral Occ Sensor

**Example Models:**  
RXA24-2LMD/40-CW-VARDM-122  
RXA24-SO2LXX-8200/40-CW-VARDM-122

Modifications are available to meet custom requirements.

Photometric Data for a 1x4 fixture with three rows (Full Output)

Lumens	Input Watts	Lumens / Watt	CCT	CRI	LED Life
18105	164.3 watts	110	4000K	>80	>100,000

Photometric Data for a 2x2 fixture with four rows (Full Output)

Lumens	Input Watts	Lumens / Watt	CCT	CRI	LED Life
13007	109 watts	119	4000K	>80	>100,000

Photometric Data for a 2x4 fixture with three rows (Full Output)

Lumens	Input Watts	Lumens / Watt	CCT	CRI	LED Life
22250	175.5 watts	127	4000K	>80	>100,000

Coefficients of Utilization - Zonal Cavity Method (RXA-LED 2x4)

Effective Floor Cavity Reflectance: 20%

RCC %:	80				70				50			30			10			0
	70	50	30	0	70	50	30	0	50	30	20	50	30	20	50	30	20	0
RW %:	1.19	1.19	1.19	1.19	1.16	1.16	1.16	1.00	1.11	1.11	1.11	1.06	1.06	1.06	1.02	1.02	1.02	1.00
RCR: 0	1.19	1.19	1.19	1.19	1.16	1.16	1.16	1.00	1.11	1.11	1.11	1.06	1.06	1.06	1.02	1.02	1.02	1.00
1	1.10	1.05	1.01	.98	1.07	1.03	.99	.86	.99	.96	.93	.95	.92	.90	.91	.89	.88	.86
2	1.00	.92	.86	.80	.97	.90	.84	.73	.87	.82	.78	.84	.79	.76	.81	.77	.74	.72
3	.91	.81	.73	.67	.89	.80	.72	.63	.77	.71	.65	.74	.69	.64	.72	.67	.63	.61
4	.84	.72	.64	.57	.82	.71	.63	.54	.69	.62	.56	.66	.60	.55	.64	.59	.55	.53
5	.77	.65	.56	.50	.75	.64	.55	.48	.62	.54	.49	.60	.53	.48	.58	.52	.48	.46
6	.71	.58	.50	.43	.70	.58	.49	.42	.56	.48	.43	.54	.48	.43	.53	.47	.42	.40
7	.66	.53	.45	.39	.65	.52	.44	.37	.51	.43	.38	.49	.43	.38	.48	.42	.38	.36
8	.62	.49	.40	.34	.60	.48	.40	.34	.47	.39	.34	.45	.39	.34	.44	.38	.34	.32
9	.58	.45	.37	.31	.56	.44	.36	.30	.43	.36	.31	.42	.35	.31	.41	.35	.31	.29
10	.54	.41	.33	.28	.53	.41	.33	.28	.40	.33	.28	.39	.32	.28	.38	.32	.28	.26

RXA-LED - Polar Candela Distribution (RXA-LED 2x4)

