

# US NAVY MIL SPEC LIGHTING

## MIL-F-16377/9 Specialized Lighting

The L.C. Doane Company  
211 Series, 3 Lamp Fixture

The 211 Series is a watertight fluorescent lighting fixture for illuminating consoles. This fixture provides two levels of intensity.

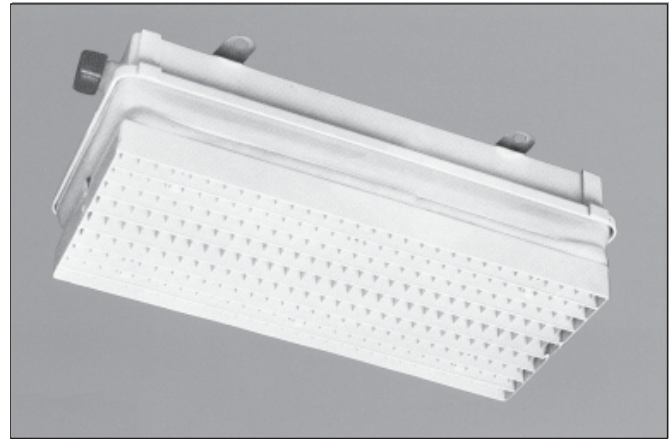
24 watts, 120 volts, 60 Hertz. Supplied with three F8T5/CW lamps, DPST toggle switch for controlling the center lamp, and ten feet of 16/3 cable.

### Standard Mounting

Overall Dimensions: 16-5/16" X 7-5/8" X 4-31/32".

Net weight: 8 lbs. 12 oz. maximum.

Approximate shipping weight for package of six: 62 lbs.



**M16377/9-211**  
Standard Mount

**NSN 6210-01-104-7480**

### Flush Mounting

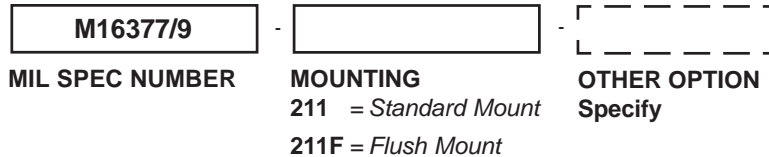
Overall Dimensions: 18-11/16" X 9-15/16" X 4-31/32".

Net weight: 10 lbs. maximum.

Approximate shipping weight for package of six: 70 lbs.

### How To Order By Military Spec Number

Example: M16377/9-211 (Refer to the Index pages for crosses to NSN numbers)



### On Board Repair Parts For MIL-DTL-16377/9, 3 Lamp Fixtures

For other available on board repair parts refer to the Repair Parts page.

ITEM DESCRIPTION	L.C. DOANE PART NUMBER	MILITARY NUMBER	NSN NUMBER
WHITE LOUVER/WHITE CLEAR WINDOW	B-1642-NS		
BLACK LOUVER/WHITE CLEAR WINDOW	B-1642-ANS		
BLACK LOUVER/BLACK CLEAR WINDOW	B-1642-BNS		



THE L.C. DOANE COMPANY DESIGNERS AND MANUFACTURERS OF SPECIALIZED LIGHTING EQUIPMENT  
Ivoryton, CT 06442 • (860) 767-8295 • Fax (860) 767-1397 • Web Site: [www.lcdoane.com](http://www.lcdoane.com) Rev J