



# LED Globe Fixture

## 700 Series

The 700 Series is a watertight LED lighting fixture with glass globe for general lighting.

### Mounting

Mounts to ceiling surfaces.

### Light Source

One LED array, powered by integral 120V 60Hz driver. Input power: 11W. Dimmable.

### Lens

High impact, heat-resistant glass globe.

### Housing

Base, mid-section, and clamp ring manufactured from die cast A360 aluminum.

### Finish

Polyester powder-coated after phosphate pretreatment for superior adhesion and corrosion resistance.

### Cable

Not supplied with fixture.

### Certifications

First article qualified



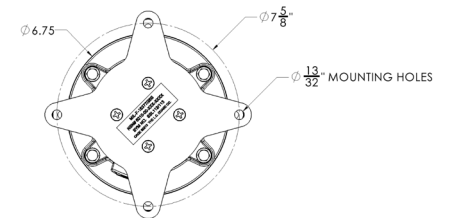
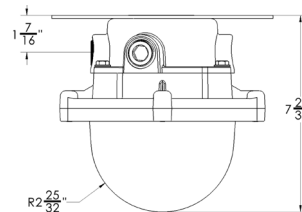
Red  
M16377/26-113SSL  
NSN: 6210-01-605-0603



White  
M16377/26-112SSL  
NSN: 6210-01-585-6039



Amber  
M16377/26-113.1SSL  
NSN: 6210-01-605-0599



MIL-SPEC	SLANT	SYMBOL	one
M16377	26	-	-

Symbol	Color	one Options
112SSL	White transparent/diffusing	W White
113SSL	Red transparent/diffusing	R Red
113.1SSL	Amber transparent/diffusing	A Amber

Replacement Item	L.C. Doane Number	Military Number	NSN
White Diffusing Glass Globe	P-3052	M16377/26-002	6210-00-635-8819
Red Diffusing Glass Globe	P-3052-R	M16377/26-003	6210-00-635-8820
Amber Diffusing Glass Globe	P-3052-A	M16377/26-005	6210-01-166-7185
Power Supply with Array	B-703	-	-

Modifications are available to meet custom requirements. Specifications and dimensions are subject to change without notice.