



Overhead Lighting

311-LED Series

The 311-LED Series is a watertight LED lighting fixture for Command Information Center (CIC) lighting. The two outside blue LED arrays are individually switchable.

Mounting

Mounts to ceiling surfaces or flush within them.

Light Source

One white and two blue LED arrays, powered by 120 V 60 Hz drivers, provide solid state illumination.

Lens

1/4 in. thick black masked lens includes a louver assembly mounted to a clear lens opening.

Housing

Manufactured from die-formed aluminum center with die cast aluminum ends.

Finish

Polyester powder-coated after phosphate pretreatment for superior adhesion and corrosion resistance.

Wiring

Supplied with 10 ft. of LSFHOF-3 cable. LSMHOF-7 cable used with emergency circuit option (75A).

Standard Mounting

Overall Dimensions: 29-1/4" X 9-9/16" X *5-5/8".

Flush Mounting

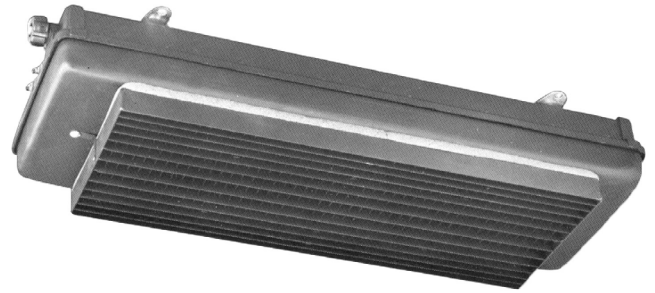
Overall Dimensions: 31-5/8" X 11-7/8" X *5-5/8".

*NEALS Emergency Unit

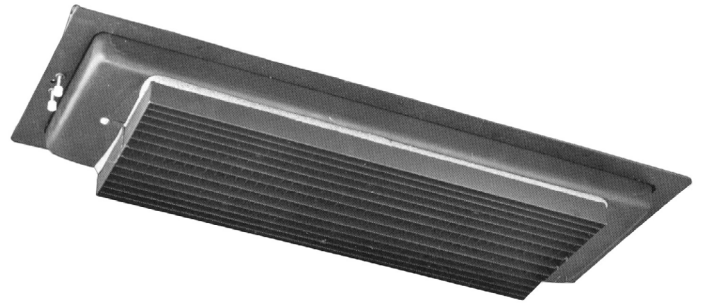
8" overall depth.

Certifications

First Article Qualified.



Standard Mount
M16377/12-341.1SSL
NSN 6210-01-673-9541



Flush Mount
M16377/12-341.2SSL



MIL-SPEC	SLANT	SYMBOL	one	two
M16377	/	-	-	-

Slant	Electrical rating	one	Mounting
12C	Three LED arrays	F	Flush mount
75A	Three LED arrays with additional emergency circuit, <u>Standard mount only.</u>	two	Option
Symbol	Mounting	10G	10' LSMHOF-7 ground cable
341.1SSL	Standard Mount clear/black shielded window	E	NEALS battery backup
341.2SSL	Flush Mount clear/black shielded window		
341.1EMSSL	341.1SSL with emergency battery pack		

Replacement Item	L.C. Doane Number	Military Number	NSN
1 Driver & 1 White Array Kit	B-3335	-	-
1 Driver & 1 Blue Array Kit	B-3335A-BLUE	-	-
Window Assembly	B-1128-ANS	M16377/12-003	6210-00-725-9030
DPST Toggle Switch	B-573-D	-	-
Shockmount	B-1591-BS	M16377/41-009	6210-00-973-1747
NEALS Emergency Battery Pack	B-2860-311	-	6210-01-675-0435

Modifications are available to meet custom requirements. Specifications and dimensions are subject to change without notice.