



M290

Commercial Marine Incandescent

PRODUCT SPECIFICATION

Detail Light M290 Series

The M290 Series is a simple watertight lighting solution. It's available with a white or red diffusing lens.

Light Source

One double contact bayonet candelabra style lamp, not included.

Lens

Thermoformed white or prismatic 1/4" acrylic lens secured to the housing with four captive screws. Gasketed with a closed cell neoprene O-ring for a watertight seal.

Housing

Manufactured of cast aluminum. Packed with a liquid and oil tight cord grip.

Weight

1.5 lbs (0.7kg)

Features

Watertight housing
UL 1598A marine
IP67

Applications

- Refrigerated spaces
- Detail light
- Small areas
- Emergency circuits

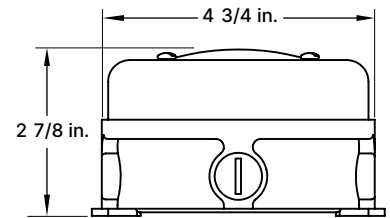
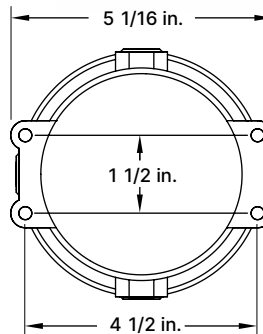
Job Name _____

Fixture Type _____

Catalog No. _____

Approval _____

Date _____



M290 -

one

one

- Lens**
- W White acrylic
 - R Red acrylic
 - P Clear prismatic acrylic

Modifications are available to meet custom requirements. Specifications and dimensions are subject to change without notice.