



M290-LED

Commercial Marine LED

PRODUCT SPECIFICATION

Overhead Lighting M290-LED Series

The M290-LED Series is a simple watertight lighting solution. It is available with a white or red diffusing lens. 10-28 VDC or 120-277 VAC.

Light Source

4000K CCT, >80 CRI, 100,000 hrs.

AC

814 Lumen fixture output, 3-step dimming - internal

Lumens / watt: 116

Input Power: 7W

DC

1,116 Lumen fixture output, dimmable - internal

Lumens / watt: 113

Input Power: 10W

Lens

Thermoformed white or prismatic 1/4" acrylic lens secured to the housing with four captive screws. Gasketed with a closed cell neoprene O-ring for a watertight seal.

Housing

Manufactured of cast aluminum.

Packed with a liquid and oil tight cord grip.

Weight

1.5 lbs (0.7kg)

Features

Watertight housing

UL 1598A marine

IP67

Applications

- Refrigerated spaces
- Detail light
- Small areas
- Emergency circuits

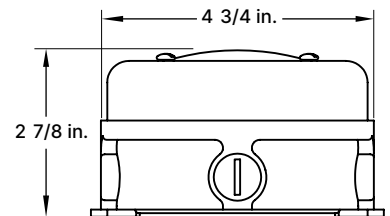
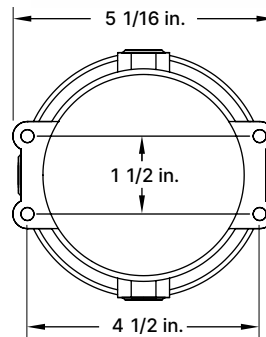
Job Name _____

Fixture Type _____

Catalog No. _____

Approval _____

Date _____



| | | | | | | | | |
|------|---|-----|---|-----|---|-------|---|------|
| M290 | - | one | - | two | - | three | - | four |
|------|---|-----|---|-----|---|-------|---|------|

one Voltage

DC 10-28 VDC

AC 120-277 VAC

two LED Source

Refer to the LED Source Table on page 2 for available options (AC only).

three Color Temperature

30 3000K

35 3500K

40 4000K

50 5000K

four Lens

W White acrylic

R Red acrylic

NV Cyan Night Vision

Modifications are available to meet custom requirements. Specifications and dimensions are subject to change without notice.

| CRI | LED Life |
|-----|----------|
| >80 | >100,000 |

| LED Source (AC Only) (Box 2) | 3000K | | 3500K | | 4000K | | 5000K | | Input Watts |
|------------------------------------|------------------|-----|------------------|-----|------------------|-----|------------------|-----|-------------|
| | Delivered Lumens | L/W | Delivered Lumens | L/W | Delivered Lumens | L/W | Delivered Lumens | L/W | |
| 1W3 | 329 | 122 | 334 | 124 | 344 | 127 | 354 | 131 | 2.7 |
| 1W5 | 563 | 117 | 571 | 119 | 588 | 123 | 604 | 126 | 4.8 |
| 1W8 | 779 | 111 | 791 | 113 | 814 | 116 | 837 | 120 | 7.0 |

Modifications are available to meet custom requirements.
 Specifications and dimensions are subject to change without notice.