



HRSM-LED

Healthcare Surgical **LED** Symmetrical Grid / Flange 1 to 1.5 in. T Grid

PRODUCT SPECIFICATION

The HRSM series is designed for dust-free operation in surgical suites where symmetrical distribution illumination is required.

Mounting

Suitable for installation in recessed 1"-1.5" T-Grid or hard ceiling applications. Hard ceiling (flange) type mounts via swing arm brackets that extend and clamp with a single screw action. Swing arm bracket also serves as connection for earthquake cables.

Housing

18 gauge cold rolled steel die-formed to shape with seams welded, ground smooth, and caulked airtight. Aluminum and 304 stainless steel available.

Door

One-piece 18 gauge cold rolled steel, gasketed and sealed overlapping door. Freedom Hinge™ design permits removal and hinging from either side. Aluminum and 304 stainless steel available.

Lens

Optic Plus lens (standard) completely hides diode image while providing greater than 90% light transmission.

Finish

Antimicrobial white powder-coat applied after phosphate pretreatment for superior adhesion and corrosion resistance. Brushed stainless steel door available.

Hardware

Stainless steel fasteners.

Driver

Tested and Certified MIL461 driver

Certifications

UL Listed wet location and IP65 rated. Suitable for use in ISO-3 cleanrooms (209E Class 1). Certified to MIL-STD-461F: CE101, CE102, CS101, CS106, CS114, CS116, RE101, RE102, RS101, RS103, MIL-STD-1399-300B: 5.3.1 through 5.3.9.

Job Name _____

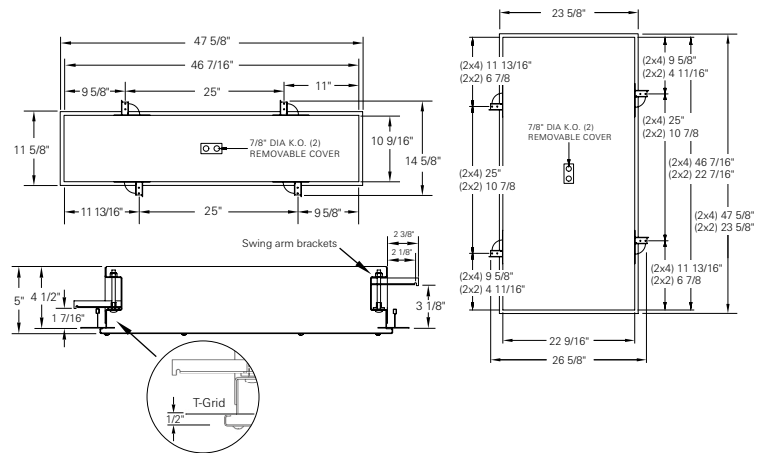
Fixture Type _____

Catalog No. _____

Approval _____ Date _____



Ceiling Grid / Flange Design



one	two	three	four	five	six	seven	eight	nine	ten	eleven	
HRSM	-	/	-	-	-	-	MIL	-	122	/	-

one Luminaire Size

- 14 1 x 4
- 22 2 x 2
- 24 2 x 4

two LED Source

Refer to the LED Source Table on Page 2 for available options.

three Color Temperature

- 35 3500K
- 40 4000K
- 50 5000K

four CRI

- 80 Min 80 CRI
- 90 Min 90 CRI

five Door Material

- A Aluminum
- C Cold rolled steel, standard
- S 304 Stainless steel

seven Voltage

- R Brushed (Stainless steel only)
- W White

eight Driver

- MIL MIL461 Tested and Certified
- Refer to HRS Series for dimming applications

nine Internal Lens

- 122 Optic Plus diffusing acrylic, standard
- 130 .125 in. LED diffusing Lexan

ten External Lens

- 00 No external lens
- 33 .125 in. clear polycarbonate

eleven Options

- CU Canadian UL Listing
- CP CCEA Chicago
- EM 12W LED EM standard
- Consult factory for lower outputs.
- FH Fuse and holder

Housing Material

- AH Aluminum
- SH Stainless steel

View LCDoane-HRS-LED-luminaire.pdf

Modifications are available to meet custom requirements. Specifications and dimensions are subject to change without notice.

LED Life
>100,000

LED Source (Box 2)	4000K 80 CRI		4000K 90 CRI		5000K 80 CRI		5000K 90 CRI		Input Watts
	Delivered Lumens	L/W	Delivered Lumens	L/W	Delivered Lumens	L/W	Delivered Lumens	L/W	
1' x 4' Fixture									
2W42	4125	134	3418	111	4243	138	3536	115	31
2W82	8066	127	6683	105	8296	131	6913	109	64
2' x 2' Fixture									
4W45	4428	144	3669	119	4554	148	3795	123	31
4W89	8657	136	7173	113	8905	140	7420	117	64
6W133	12986	137	10760	113	13357	141	11131	117	95
2' x 4' Fixture									
2W44	4299	139	3562	115	4421	143	3684	119	31
2W86	8404	131	6963	109	8644	135	7204	113	64
3W129	12606	133	10445	110	12966	136	10805	114	95
4W172	16808	132	13927	110	17289	136	14407	113	127
6W259	25213	132	20890	109	25933	136	21611	113	191

Photometric Data with 122 lens

33 lens multiplier	.86
--------------------	-----

MIL461 LED Driver

The L.C. Doane MIL461 driver is tested and certified to MIL461-F, but is compliant to 461G and all RE, RS, CE, and CS test protocol

- The tests encompass Radiated Emissions, Radiated Susceptibility, Conducted Emissions and Conducted Susceptibility
- L.C. Doane’s MIL461F compliant drivers are tested by a recognized, independent 3rd party lab.

MIL461 driver:

- Use multiple driver/circuits to achieve light levels
- This solution assures the end user that ALL MIL461 requirements are met
- No RF Grid lens or RF Filtering required as the MIL461 is accomplished at the driver level

MIL-461 Certifications

- | | |
|--|--|
| <ul style="list-style-type: none"> • CE101 • CE102 • CS101 • CS106 • CS114 • CS116 | <ul style="list-style-type: none"> • RE101 • RE102 • RS101 • RS103 • MIL-STD-1399-300B: 5.3.1-5.3.9 |
|--|--|