



HRS-LED

Healthcare Surgical **LED** Symmetrical Grid / Flange 1 to 1.5 in. T Grid

PRODUCT SPECIFICATION

The HRS series is designed for dust-free operation in surgical suites where symmetrical distribution illumination is required.

Mounting

Suitable for installation in recessed 1"-1.5" T-Grid or hard ceiling applications. Hard ceiling (flange) type mounts via swing arm brackets that extend and clamp with a single screw action. Swing arm bracket also serves as connection for earthquake cables.

Housing

18 gauge cold rolled steel die-formed to shape with seams welded, ground smooth, and caulked airtight. Aluminum and 304 stainless steel available.

Door

One-piece 18 gauge cold rolled steel, gasketed and sealed overlapping door. Freedom Hinge™ design permits removal and hinging from either side. Aluminum and 304 stainless steel available.

Lens

Optic Plus lens (standard) completely hides diode image while providing greater than 90% light transmission.

Finish

Antimicrobial white powder-coat applied after phosphate pretreatment for superior adhesion and corrosion resistance. Brushed stainless steel door available.

Hardware

Stainless steel fasteners.

Driver

0-10Vdc 1% dimming, >0.9 PF, <20% THD
Factory programmable, Operating temp -40°C Min. to 50°C Max

Certifications

UL Listed wet location and IP65 rated.
Suitable for use in ISO-3 cleanrooms (209E Class 1).

Job Name _____

Fixture Type _____

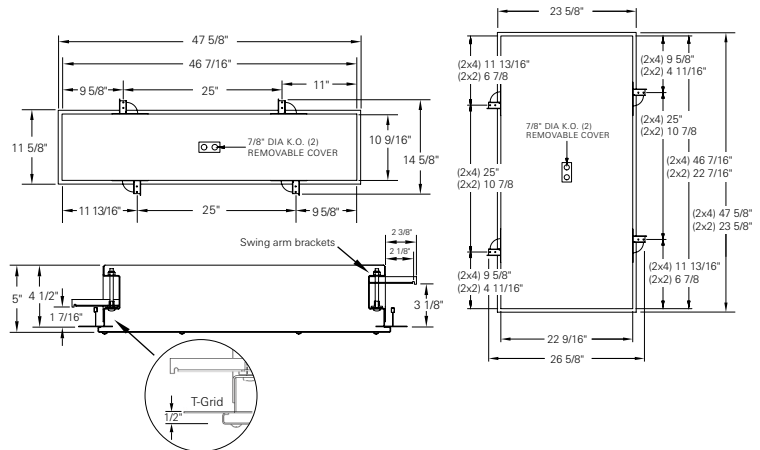
Catalog No. _____

Approval _____

Date _____



Ceiling Grid / Flange Design



one two three four five six seven eight nine ten eleven

HRS - / - VAR DM - / -

one Luminaire Size

- 14 1 x 4, three rows max
- 22 2 x 2
- 24 2 x 4

two LED Source

Refer to the LED Source Table on Page 2 for available options.

three Color Temperature

- 35 3500K
- 40 4000K
- 50 5000K

four CRI

- 80 Min 80 CRI
- 90 Min 90 CRI

five Door Material

- A Aluminum
- C Cold rolled steel, standard
- S 304 Stainless steel

six Door Finish

- R Brushed (Stainless steel only)
- W White

seven Voltage

VAR Variable, 120-277 V, 50/60Hz

eight Driver

DM 0-10VDC 1% Dimming, standard

nine Internal Lens

- 122 Optic Plus diffusing acrylic, standard
- 122R Optic Plus with RF grid*
Must be used with RF filter
- 130 .125 in. LED diffusing Lexan

ten External Lens

- 00 No external
- 33 .125 in. clear polycarbonate

eleven Options

- 2C Two circuit wired
- CU Canadian UL Listing
- CP CCEA Chicago
- EM Emergency battery backup
- FH Fuse and holder
- IMS Integral Occ Sensor
- NL-LED Night light, LED
- PF Plaster frame
- RF Radio interference filter, one per circuit*
- TP Stainless steel torx head fasteners

Housing Material

- Aluminum
- Stainless steel

* Conducted and radiated emissions controlled as per MIL461 with the use of 122R lens and RF Filter.

For **Tested and Certified** MIL461 performance, refer to HRSM Series.

View LCDoane-HRSM-LED-luminaire.pdf

Modifications are available to meet custom requirements. Specifications and dimensions are subject to change without notice.

CRI	LED Life
>80	>100,000

LED Source (Box 2)	4000K 80 CRI		4000K 90 CRI		5000K 80 CRI		5000K 90 CRI		Input Watts
	Delivered Lumens	L/W	Delivered Lumens	L/W	Delivered Lumens	L/W	Delivered Lumens	L/W	
1' x 4' Fixture									
1W55	5391	131	4466	109	5545	135	4602	112	41.0
2W75	7881	132	6530	109	8106	136	6728	113	59.8
2W100	10325	130	8555	108	10620	134	8815	111	79.3
2W130	13820	126	11451	104	14215	130	11798	108	109.6
2' x 2' Fixture									
2W55	5445	133	4512	110	5601	137	4649	113	41.0
2W70	6980	127	5783	106	7179	131	5959	109	54.8
4W80	8473	133	7020	110	8715	137	7233	114	63.7
4W100	10890	133	9023	110	11202	136	9298	113	82.1
4W140	13960	127	11567	106	14359	131	11918	109	109.6
6W180	18358	131	15211	108	18883	134	15673	112	140.5
6W200	20940	127	17350	106	21538	131	17877	109	164.4
2' x 4' Fixture									
2W55	5869	147	4863	122	6037	152	5011	126	39.8
2W90	9354	138	7750	115	9621	142	7985	118	67.6
2W120	12281	137	10175	113	12631	141	10484	117	89.8
3W160	17008	138	14093	114	17494	142	14520	118	123.1
3W200	21802	133	18065	110	22425	136	18613	113	164.4
4W230	24561	137	20351	113	25263	141	20968	117	179.6
4W270	27301	134	22621	111	28081	138	23307	115	203.2
6W300	30635	142	25383	117	31510	146	26153	121	216.3
6W350	36842	137	30526	113	37894	141	31452	117	269.4
6W400	43605	133	36130	110	44851	136	37226	113	328.7

Specified Output Option

LC Doane programmable drivers allows us to deliver a specific lumen output. If none of the options in the chart above fit your application, let us know the desired lumen output and we will do the rest. See the example for a 2x4 on how this will be specified:

Example Model:
 HRS24-XX¹SO-40/80-CW-VARDM-122/00-(XX²/LUMENS)

LUMENS = You provide the lumens.

XX¹ = We will determine the number of rows.

XX² = We will provide the wattage information.

Photometric Data @ 80 CRI with 122 lens

Use the multipliers below to adjust the delivered lumens

33 lens multiplier	.86
--------------------	-----