



FHG-LED

Correctional LED Recessed Flange

PRODUCT SPECIFICATION

The FHG series is designed for use in all levels of correctional facilities and high abuse applications.

Mounting

Mounts recessed in metal pan or gypsum ceiling with universal mounting brackets.

Housing

Die-formed cold rolled steel with seams welded and ground smooth. 304 Stainless steel is also available.

Door

One piece, die formed cold rolled steel door with 14 gauge lens retainers and a full length welded pin piano hinge. 304 Stainless steel available.

Internal Lens

Optic Plus lens (standard) completely hides diode image while providing greater than 90% light transmission.

Finish

Polyester powder-coated after phosphate pretreatment for superior adhesion and corrosion resistance. Brushed stainless steel available.

Hardware

Recessed, stainless steel, tamper-proof fasteners.

Driver

0-10Vdc 1% dimming, >0.9 PF, <20% THD
Factory programmable, Operating temp -40°C Min. to 50°C Max

Wiring

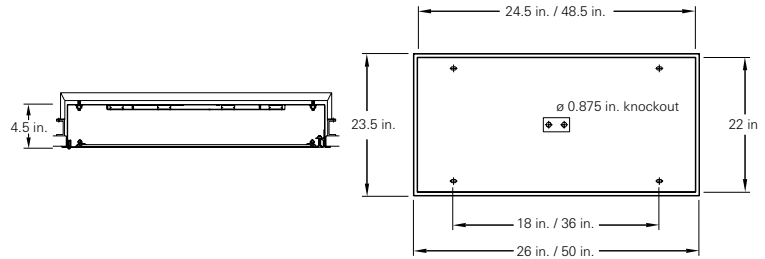
Access plate with two .875 in. diameter knockouts.
Driver provided with pre-wired 3-wire self-aligning input power quick disconnect and 2-wire quick disconnect to LED module.

Job Name _____

Fixture Type _____

Catalog No. _____

Approval _____ Date _____



Certifications

UL Listed damp or wet location. IP54 rated.



one two three four five six seven eight nine ten eleven twelve thirteen fourteen
FHG - / - DM - / - -

one	Luminaire Size	seven	Finish	twelve	Door Fasteners
2	2 ft fixture	R	Brushed (stainless steel only)	AP	Stainless steel allen head with pin
4	4 ft fixture	W	White	TP	Stainless steel torx head with pin
two	LED Rows	eight	Voltage	PH	Phillips, non-security
2L	Two	VAR	Variable, 120-277 V, 50/60Hz	thirteen	UL Listing
3L	Three	347	347VAC, 60Hz	D	Damp Location
4L	Four	nine	Driver	W	Wet Location
three	Color Temperature	DM	0-10Vdc Dimming, <u>standard</u>	fourteen	Options
30	3000K	ten	Internal Lens	SO	Specified output*
35	3500K	122	Optic Plus LED diffusing acrylic, <u>std</u>	2C	Two-circuit wired
40	4000K	130	.125 in. LED diffusing Lexan	CP	CCEA Chicago
50	5000K	53	.125 in. K12 prismatic acrylic	CU	Canadian UL Listing
four	CRI	12	.125 in. K12 prismatic polycarbonate	EM	Emergency battery backup
80	80 CRI	15	.156 in. K12 prismatic polycarbonate	FH	Fuse and holder
90	90 CRI	16	.187 in. K12 prismatic polycarbonate	NL-LED	Night light, LED (Amber available) 5-100% Adjustability
five	Material Gauge	eleven	External Lens	IMS	Integral Occ Sensor
N	18 gauge, minimum security	30	.187 in. clear polycarbonate	PF	Plaster frame
D	16 gauge, medium security	32	.250 in. clear polycarbonate		
X	14 gauge, maximum security	36	.375 in. clear polycarbonate		
six	Material	38	.500 in. clear polycarbonate		
C	Cold rolled steel	90	.187 in. clear tempered glass		
S	Stainless steel	92	.250 in. clear tempered glass		
		96	.375 in. clear tempered glass		

* Indicated as SO(xx/xxxx). Specified output, Input watts / delivered lumens to be determined based on specified requirements

Modifications are available to meet custom requirements. Specifications and dimensions are subject to change without notice.

Photometric Data for a 2x2 fixture with four rows (Full Output)

Lumens	Input Watts	Lumens / Watt	CCT	CRI	LED Life
13007	109 watts	119	3950K	83.1	>100,000

Photometric Data for a 2x4 fixture with three rows (Full Output)

Lumens	Input Watts	Lumens / Watt	CCT	CRI	LED Life
22250	175.5 watts	127	3896K	83.4	>100,000

Coefficients of Utilization - Zonal Cavity Method (FHG-LED 2x4)

Effective Floor Cavity Reflectance: 20%

RCC %:	80				70				50			30			10			0
	70	50	30	0	70	50	30	0	50	30	20	50	30	20	50	30	20	0
RW %:	1.19	1.19	1.19	1.19	1.16	1.16	1.16	1.00	1.11	1.11	1.11	1.06	1.06	1.06	1.02	1.02	1.02	1.00
RCR: 0	1.19	1.19	1.19	1.19	1.16	1.16	1.16	1.00	1.11	1.11	1.11	1.06	1.06	1.06	1.02	1.02	1.02	1.00
1	1.10	1.05	1.01	.98	1.07	1.03	.99	.86	.99	.96	.93	.95	.92	.90	.91	.89	.88	.86
2	1.00	.92	.86	.80	.97	.90	.84	.73	.87	.82	.78	.84	.79	.76	.81	.77	.74	.72
3	.91	.81	.73	.67	.89	.80	.72	.63	.77	.71	.65	.74	.69	.64	.72	.67	.63	.61
4	.84	.72	.64	.57	.82	.71	.63	.54	.69	.62	.56	.66	.60	.55	.64	.59	.55	.53
5	.77	.65	.56	.50	.75	.64	.55	.48	.62	.54	.49	.60	.53	.48	.58	.52	.48	.46
6	.71	.58	.50	.43	.70	.58	.49	.42	.56	.48	.43	.54	.48	.43	.53	.47	.42	.40
7	.66	.53	.45	.39	.65	.52	.44	.37	.51	.43	.38	.49	.43	.38	.48	.42	.38	.36
8	.62	.49	.40	.34	.60	.48	.40	.34	.47	.39	.34	.45	.39	.34	.44	.38	.34	.32
9	.58	.45	.37	.31	.56	.44	.36	.30	.43	.36	.31	.42	.35	.31	.41	.35	.31	.29
10	.54	.41	.33	.28	.53	.41	.33	.28	.40	.33	.28	.39	.32	.28	.38	.32	.28	.26

FHG-LED - Polar Candela Distribution (FHG-LED 2x4)

