



FHG-LED

Correctional LED Recessed Flange

PRODUCT SPECIFICATION

The FHG series is designed for use in all levels of correctional facilities and high abuse applications.

Mounting

Mounts recessed in metal pan or gypsum ceiling with universal mounting brackets.

Housing

Die-formed cold rolled steel with seams welded and ground smooth. 304 Stainless steel is also available.

Door

One piece, die formed cold rolled steel door with 14 gauge lens retainers and a full length welded pin piano hinge. 304 Stainless steel available.

Internal Lens

Optic Plus lens (standard) completely hides diode image while providing greater than 90% light transmission.

Finish

Polyester powder-coated after phosphate pretreatment for superior adhesion and corrosion resistance. Brushed stainless steel available.

Hardware

Recessed, stainless steel, tamper-proof fasteners.

Driver

0-10Vdc 1% dimming, >0.9 PF, <20% THD
Factory programmable, Operating temp -40°C Min. to 50°C Max

Wiring

Access plate with two .875 in. diameter knockouts.
Driver provided with pre-wired 3-wire self-aligning input power quick disconnect and 2-wire quick disconnect to LED module.

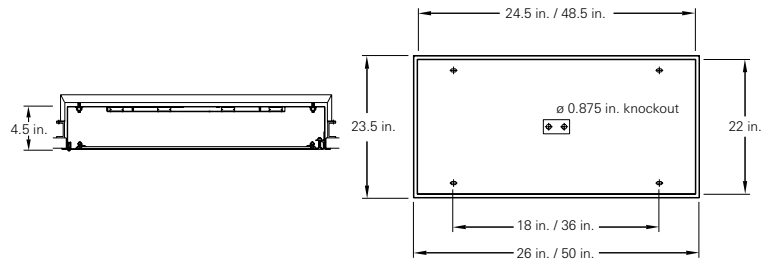
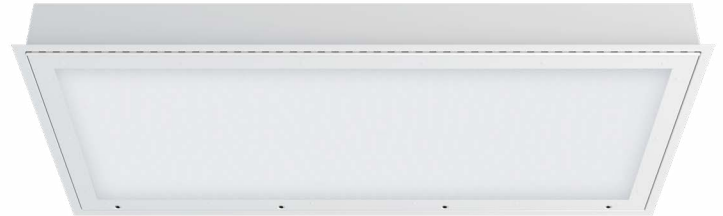
Job Name

Fixture Type

Catalog No.

Approval

Date



Certifications

UL Listed damp or wet location. IP54 rated.



one two three four five six seven eight nine ten eleven twelve thirteen fourteen
FHG - / - DM - / - -

one Luminaire Size

- 2 2 ft fixture
- 4 4 ft fixture

two LED Rows

- 2L Two
- 3L Three
- 4L Four

three Color Temperature

- 30 3000K
- 35 3500K
- 40 4000K
- 50 5000K

four CRI

- 80 80 CRI
- 90 90 CRI

five Material Gauge

- N 18 gauge, minimum security
- D 16 gauge, medium security
- X 14 gauge, maximum security

six Material

- C Cold rolled steel
- S Stainless steel

seven Finish

- R Brushed (stainless steel only)
- W White

eight Voltage

- VAR Variable, 120-277 V, 50/60Hz
- 347 347VAC, 60Hz

nine Driver

- DM 0-10Vdc Dimming, standard

ten Internal Lens

- 122 Optic Plus LED diffusing acrylic, std
- 130 .125 in. LED diffusing Lexan
- 53 .125 in. K12 prismatic acrylic
- 12 .125 in. K12 prismatic polycarbonate
- 15 .156 in. K12 prismatic polycarbonate
- 16 .187 in. K12 prismatic polycarbonate
- 75 .156 in. C73 prismatic tempered glass

eleven External Lens

- 30 .187 in. clear polycarbonate
- 32 .250 in. clear polycarbonate
- 36 .375 in. clear polycarbonate
- 38 .500 in. clear polycarbonate
- 90 .187 in. clear tempered glass
- 92 .250 in. clear tempered glass
- 96 .375 in. clear tempered glass

twelve Door Fasteners

- AP Stainless steel allen head with pin
- TP Stainless steel torx head with pin
- PH Phillips, non-security

thirteen UL Listing

- D Damp Location
- W Wet Location

fourteen Options

- SO Specified output*
- 2C Two-circuit wired
- CP CCEA Chicago
- CU Canadian UL Listing
- EM Emergency battery backup
- FH Fuse and holder
- NL-LED Night light, LED (Amber available)
5-100% Adjustability
- IMS Integral Occ Sensor
- PF Plaster frame

* Indicated as SO(xx/xxxx). Specified output, Input watts / delivered lumens to be determined based on specified requirements

Modifications are available to meet custom requirements. Specifications and dimensions are subject to change without notice.

Photometric Data for a 2x2 fixture with four rows (Full Output)

Lumens	Input Watts	Lumens / Watt	CCT	CRI	LED Life
13007	109 watts	119	3950K	83.1	>100,000

Photometric Data for a 2x4 fixture with three rows (Full Output)

Lumens	Input Watts	Lumens / Watt	CCT	CRI	LED Life
22250	175.5 watts	127	3896K	83.4	>100,000

Coefficients of Utilization - Zonal Cavity Method (FHG-LED 2x4)

Effective Floor Cavity Reflectance: 20%

RCC %:	80				70				50			30			10			0
	70	50	30	0	70	50	30	0	50	30	20	50	30	20	50	30	20	0
RW %:	1.19	1.19	1.19	1.19	1.16	1.16	1.16	1.00	1.11	1.11	1.11	1.06	1.06	1.06	1.02	1.02	1.02	1.00
RCR: 0	1.19	1.19	1.19	1.19	1.16	1.16	1.16	1.00	1.11	1.11	1.11	1.06	1.06	1.06	1.02	1.02	1.02	1.00
1	1.10	1.05	1.01	.98	1.07	1.03	.99	.86	.99	.96	.93	.95	.92	.90	.91	.89	.88	.86
2	1.00	.92	.86	.80	.97	.90	.84	.73	.87	.82	.78	.84	.79	.76	.81	.77	.74	.72
3	.91	.81	.73	.67	.89	.80	.72	.63	.77	.71	.65	.74	.69	.64	.72	.67	.63	.61
4	.84	.72	.64	.57	.82	.71	.63	.54	.69	.62	.56	.66	.60	.55	.64	.59	.55	.53
5	.77	.65	.56	.50	.75	.64	.55	.48	.62	.54	.49	.60	.53	.48	.58	.52	.48	.46
6	.71	.58	.50	.43	.70	.58	.49	.42	.56	.48	.43	.54	.48	.43	.53	.47	.42	.40
7	.66	.53	.45	.39	.65	.52	.44	.37	.51	.43	.38	.49	.43	.38	.48	.42	.38	.36
8	.62	.49	.40	.34	.60	.48	.40	.34	.47	.39	.34	.45	.39	.34	.44	.38	.34	.32
9	.58	.45	.37	.31	.56	.44	.36	.30	.43	.36	.31	.42	.35	.31	.41	.35	.31	.29
10	.54	.41	.33	.28	.53	.41	.33	.28	.40	.33	.28	.39	.32	.28	.38	.32	.28	.26

FHG-LED - Polar Candela Distribution (FHG-LED 2x4)

