



# MIL-DTL-16377/57

## 608 Series

Fluorescent Lighting Flush Mount

PRODUCT SPECIFICATION

### Overhead Lighting 608 Series, 3 Lamp Fixture

The 608 Series is a dripproof fluorescent lighting fixture for general lighting. The housing is constructed from marine grade aluminum. The fixture is designed for flush mounting in suspended ceilings. Available with a clear transparent prismatic lens.

**Power**  
120 volts, 60 hertz.

**Light Source**  
Three 20W or 17W T12 cool white lamps.

**Lens**  
Clear transparent prismatic lens.

**Mounting**  
Flush mounting in suspended ceilings

**Housing**  
Marine grade aluminum

**Cable**  
Supplied with 10 feet of 16/3 cable.

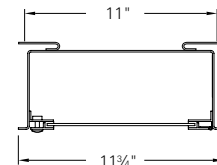
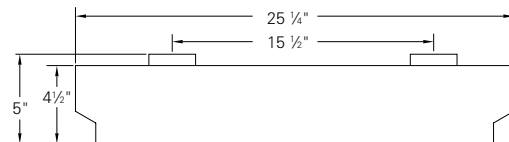
**Overall Dimensions**  
23 3/4" X 11 3/4" X 5"

**Net Weight**  
15 lbs. 14 oz. maximum.  
Approximate shipping weight for package of eight: 68 lbs.

**Certifications**  
First Article Qualified.



Flush Mount  
M16377/57-348  
NSN 6210-00-115-9186



MIL SPEC NUMBER	SYMBOL	one	two	three
M16377	/	-	-	-

<b>Symbol</b>	<b>Mount</b>	<b>two</b>	<b>Options</b>
57A	(3) 20W Lamps	S	Emergency Ballast
57B	(3) 17W Lamps	IO	High Efficiency
76	(3) 17W Lamps with Additional Emergency Circuit		
<b>one</b>	<b>Optional lamp filter tube</b>	<b>three</b>	<b>Cable option</b>
Y	Amber	15G	15' Lowsmoke Cable (ground)
B	Blue	20G	20' Lowsmoke Cable (ground)
R	Red		
G1.0	Grey 1.0%		
G2.5	Grey 2.5%		

Replacement Item	L.C. Doane Number	Military Number	NSN
Clear Prismatic Lens	B-1537-SP	M16377/9-001	6210-00-115-9188
Shockmount	B-1591-BS	M16377/41-009	6210-00-973-1747

Modifications are available to meet custom requirements. Specifications and dimensions are subject to change without notice.