



600A-LED

MIL-DTL-16377J

Standard Mount **LED**

PRODUCT SPECIFICATION

The 600A-LED series is a drip proof high output LED light fixture for general lighting.

Light Source

White 4000K 85 CRI LED - 14,000 Lumens 129W
Amber LED (2nd circuit option) - 3,900 Lumens 65W
Red LED (2nd circuit option) - 1,500 Lumens 65W
Cyan LED (2nd circuit option) - NVIS 65W

Input Voltage

115VAC 60Hz

Housing

Constructed of die formed, continuously welded marine grade aluminum

Lens

1/8" diffusing polycarbonate lens sealed to housing via silicone gasketting.

Finish

Polyester powder-coated after phosphate pretreatment for superior adhesion and corrosion resistance.

Hardware

Stainless steel fasteners

Mounting

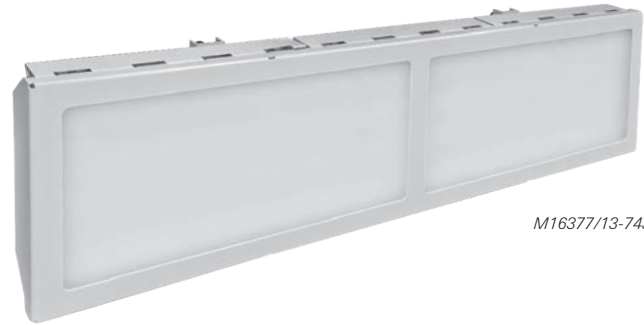
13" X 28" matches M16377/13 & /85
Overall Dimensions: 52-1/4" X 14-3/4" X 5-5/16"
Standard mount (with cable): 50.2 lbs.

Cable

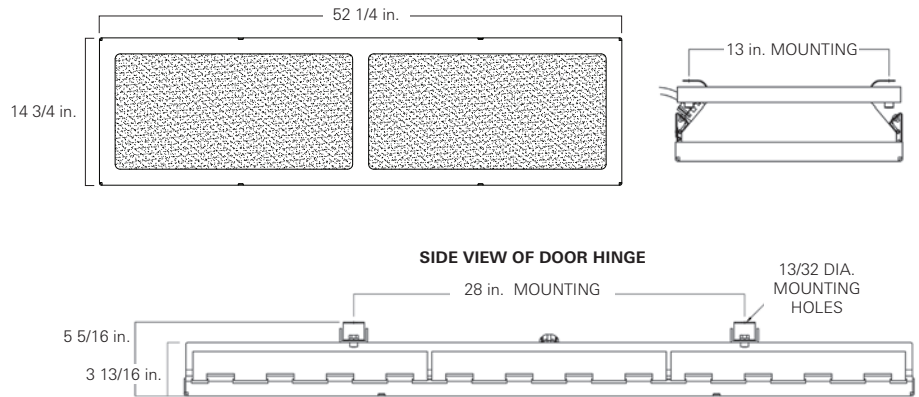
Length and type supplied per request

Certifications

Independent NRTL First Article Test Certified to MIL-DTL-16377J which includes (but not limited to): enclosure effectiveness, shock, vibration, MIL-STD-461F: CE101, CE102, CS101, CS106, CS114, CS116, RE101, RE102, RS101, RS103, MIL-STD-1399-300B: 5.3.1 THRU 5.3.9.



M16377/13-74SSL



L.C. Doane Part Number



Light Color Variant

Leave blank for standard (white)

- A White and Amber
- R White and Red
- NV White and Night Vision

Cable Options

Leave blank for standard cable

- LS20 20 ft. LSTHOF-3
- LC No Cable

Replacement Item	L.C. Doane Part Number
Driver	P-606
White LED PCB	L-LW120-LM-600-4K8
Red LED PCB	L-LR15
Amber LED Assembly	B-2000A
Lens	A-4926-HK
Shockmount	A-1036-JC

Modifications are available to meet custom requirements.