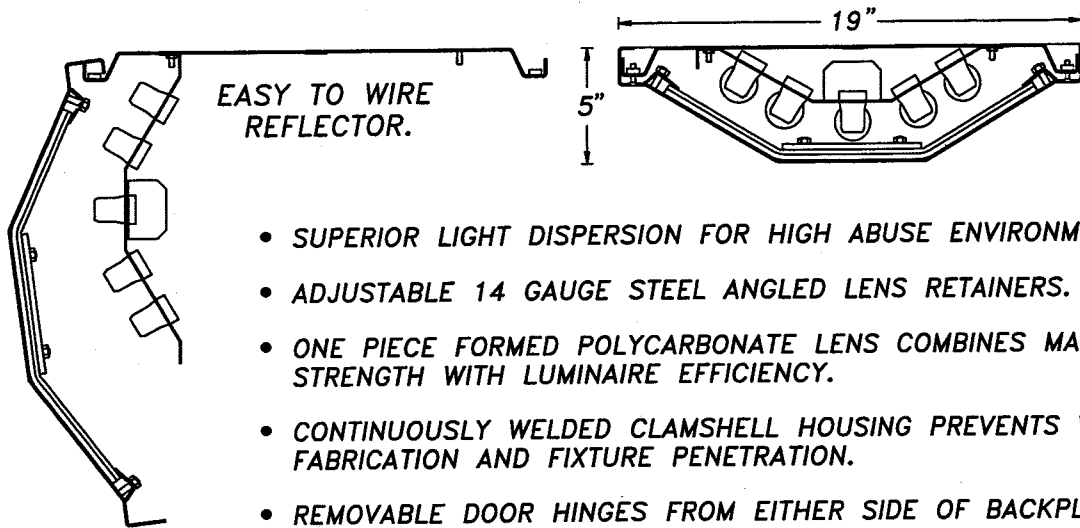
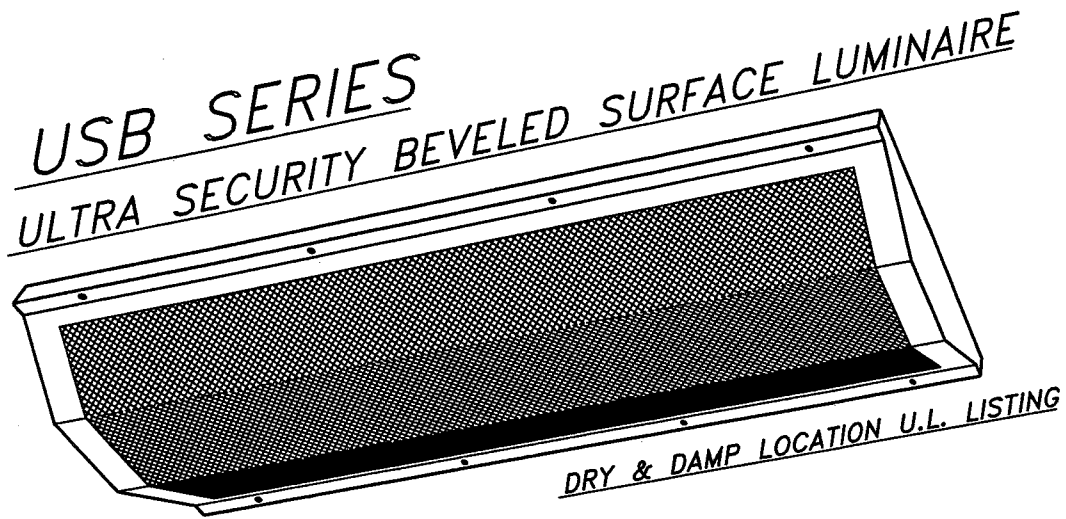
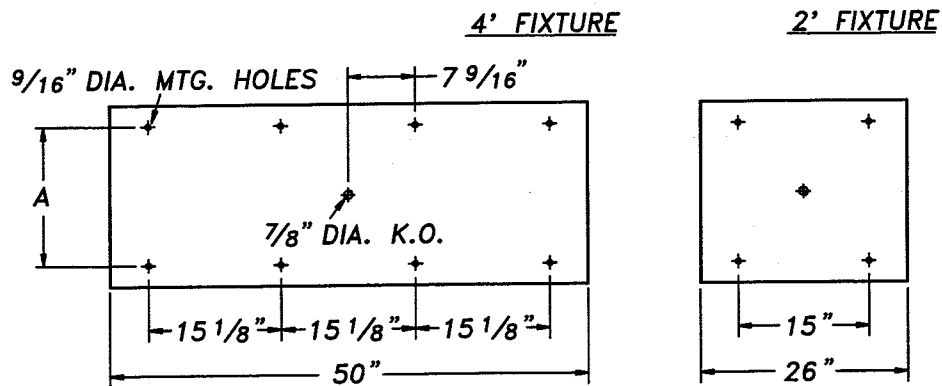


SECURITY / VANDAL RESISTANT



- SUPERIOR LIGHT DISPERSION FOR HIGH ABUSE ENVIRONMENTS.
- ADJUSTABLE 14 GAUGE STEEL ANGLED LENS RETAINERS.
- ONE PIECE FORMED POLYCARBONATE LENS COMBINES MATERIAL STRENGTH WITH LUMINAIRE EFFICIENCY.
- CONTINUOUSLY WELDED CLAMSHELL HOUSING PREVENTS WEAPON FABRICATION AND FIXTURE PENETRATION.
- REMOVABLE DOOR HINGES FROM EITHER SIDE OF BACKPLATE.
- REFLECTOR MOUNTED ELECTRICAL COMPONENTS.



DIM. A = 14 1/2" WITHOUT "-CT" OPTION.
 13 1/2" WITH "-CT" OPTION.



THE L.C. DOANE COMPANY DESIGNERS AND MANUFACTURERS OF SPECIALIZED LIGHTING EQUIPMENT
 P.O. Box 975 • Essex, CT 06426 • (860) 767-8295 • Fax (860) 767-1397 • Web Site: www.lcdoane.com

SECURITY / VANDAL RESISTANT

EXAMPLE: USB323-DCW-120EL-16/00-TPK

USB											
CHART	1	2	3	4	5	6	7	8	9	10	11

CHART 1 LAMPS	
17	17W RS 2' T8
20	20W PH 2' T12
32	32W RS 4' T8
40	40W RS 4' T12
4B	40W RS 2' T5 BIAxIAL

LAMPS NOT INCLUDED

CHART 2 LAMP QTY.	
	3
	5*

*5 LAMP NOT AVAILABLE WITH "-CT" OPTION.

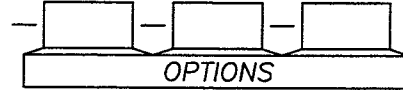
CHART 3 DOOR GAUGE	
N	18 Ga. MINIMUM SECURITY
D	16 Ga. MEDIUM SECURITY
X	14 Ga. MAXIMUM SECURITY

CHART 4 DOOR SPEC.	
C	COLD ROLLED STEEL (STD.)
S	STAINLESS STEEL

CHART 5 FINISH	
W	WHITE
R	BRUSHED, STAINLESS ONLY

CHART 6 VOLTAGE (60 Hz.)	
	120
	277

CHART 7 BALLAST	
HP	HIGH POWER FACTOR (STANDARD)
EL	ELECTRONIC
DM	DIMMING



OPTIONS

CHART 8 INTERNAL LENS	
15	.156 POLYCARB. K12 PRISM
16	.187 POLYCARB. K12 PRISM

CHART 9 EXTERNAL LENS	
00	NONE
30	.187 POLYCARBONATE
32	.250 POLYCARBONATE
36	.375 POLYCARBONATE

CHART 10 FASTENERS	
AP	ALLEN HEAD W/PIN, STAINLESS STEEL
TP	TORX HEAD W/PIN, STAINLESS STEEL
PH	PHILLIPS HEAD, NON-SECURITY

CHART 11 ELECTRICAL ACCESS	
K	.875 DIA. KNOCK OUT(S) (STD.)
A	2.250 DIA. ACCESS HOLE

OPTIONS	
CT	CONTRABAND TRAPPING BACKPLATE
NL	NIGHT LIGHT, FOR 7 OR 9W PL BI-PIN
E1	ONE LAMP EMERGENCY SERVICE
E2	TWO LAMP EMERGENCY SERVICE
FH	FUSE AND HOLDER

DIMENSIONS AND SPECIFICATIONS SUBJECT TO CHANGE WITHOUT NOTIFICATION.

MODIFICATIONS ARE AVAILABLE TO SUIT CUSTOM REQUIREMENTS.



THE L.C. DOANE COMPANY DESIGNERS AND MANUFACTURERS OF SPECIALIZED LIGHTING EQUIPMENT
 P.O. Box 975 • Essex, CT 06426 • (860) 767-8295 • Fax (860) 767-1397 • Web Site: www.lcdoane.com