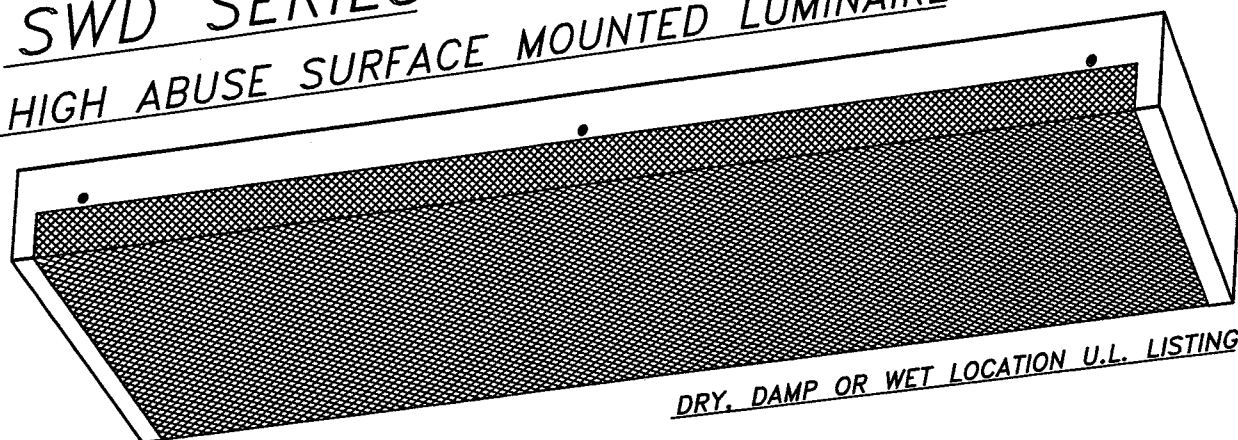
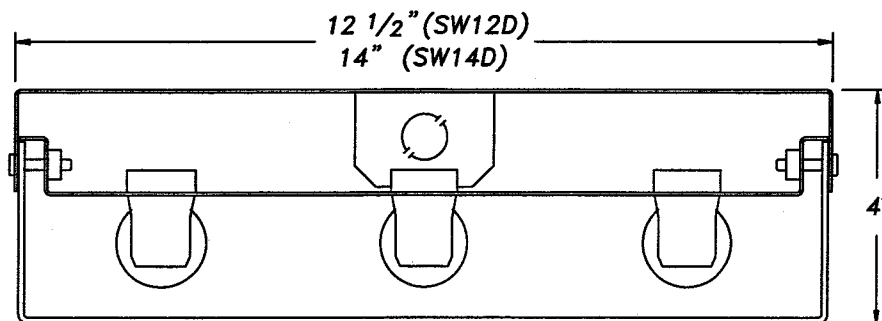


SECURITY / VANDAL RESISTANT

SWD SERIES HIGH ABUSE SURFACE MOUNTED LUMINAIRE

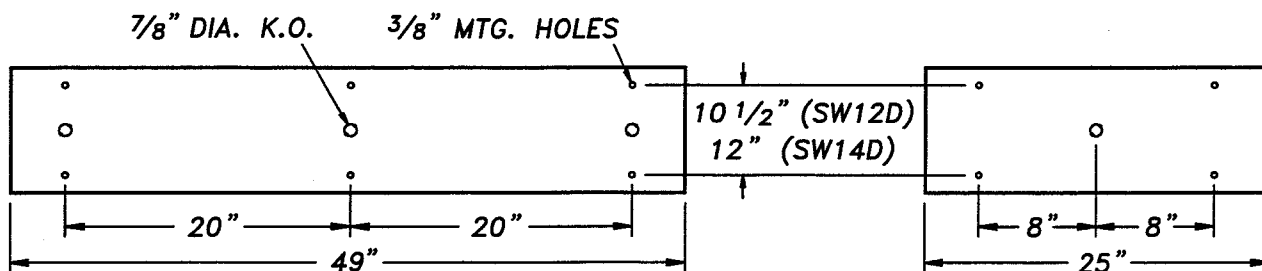


- ONE PIECE DIE FORMED HOUSING.
- CONTINUOUSLY WELDED SEAMS, GROUND SMOOTH.
- ONE PIECE IMPACT RESISTANT PRISMATIC POLYCARBONATE LENS. (DUAL LENSES AVAILABLE)
- 6 STAINLESS STEEL, TAMPERPROOF LENS RETAINING SCREWS.
- KNOCKOUTS ON BOTH ENDS PERMIT CONTINUOUS FIXTURE MOUNTING.



4' FIXTURE

2' FIXTURE



THE L.C. DOANE COMPANY DESIGNERS AND MANUFACTURERS OF SPECIALIZED LIGHTING EQUIPMENT
P.O. Box 975 • Essex, CT 06426 • (860) 767-8295 • Fax (860) 767-1397 • Web Site: www.lcdoane.com

SECURITY / VANDAL RESISTANT

EXAMPLE: SW14D323-DCW-120EL-16/00-TPD

SW				-				-		/		-		
CHART	1	2	3	4	5	6	7	8	9	10	11	12		

CHART 1 FIXTURE WIDTH	
12D	12 1/2" WIDTH
14D	14" WIDTH

CHART 2 LAMPS	
17	17W RS 2' T8
20	20W PH 2' T12
32	32W RS 4' T8
40	40W RS 4' T12
4B	40W RS 2' T5 BIAXIAL

LAMPS NOT INCLUDED

CHART 3 LAMP QTY.		
<input type="checkbox"/>	<input checked="" type="checkbox"/>	<input type="checkbox"/>
	2	3
		4

CHART 4 MATERIAL GAUGE	
N	18 Ga. MINIMUM SECURITY
D	16 Ga. MEDIUM SECURITY
X	14 Ga. MAXIMUM SECURITY

CHART 5 MATERIAL SPEC.	
C	COLD ROLLED STEEL (STD.)
S	STAINLESS STEEL
A	ALUMINUM

CHART 6 FINISH	
W	WHITE
R	BRUSHED, STAINLESS ONLY

CHART 7 VOLTAGE (60 Hz.)	
<input type="checkbox"/>	<input checked="" type="checkbox"/>
	120
	277

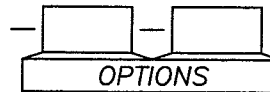


CHART 8 BALLAST	
EL	ELECTRONIC
ES	ENERGY SAVING
DM	DIMMING
LT	LOW TEMPERATURE

CHART 9 INTERNAL LENS	
15	.156 POLYCARB. K12 PRISM
16	.187 POLYCARB. K12 PRISM

CHART 10 EXTERNAL LENS	
00	NONE
30	.187 POLYCARBONATE
32	.250 POLYCARBONATE
36	.375 POLYCARBONATE

CHART 11 FASTENERS	
AP	ALLEN HEAD W/PIN, STAINLESS STEEL
TP	TORX HEAD W/PIN, STAINLESS STEEL
PH	PHILLIPS HEAD, NON-SECURITY

CHART 12 U.L. LISTING	
D	DAMP & DRY LOCATION
W	WET LOCATION

OPTIONS	
E1	ONE LAMP EMERGENCY SERVICE
E2	TWO LAMP EMERGENCY SERVICE
FH	FUSE AND HOLDER

DIMENSIONS AND SPECIFICATIONS SUBJECT TO CHANGE WITHOUT NOTIFICATION.

MODIFICATIONS ARE AVAILABLE TO SUIT CUSTOM REQUIREMENTS.



THE L.C. DOANE COMPANY DESIGNERS AND MANUFACTURERS OF SPECIALIZED LIGHTING EQUIPMENT
 P.O. Box 975 • Essex, CT 06426 • (860) 767-8295 • Fax (860) 767-1397 • Web Site: www.lcdoane.com