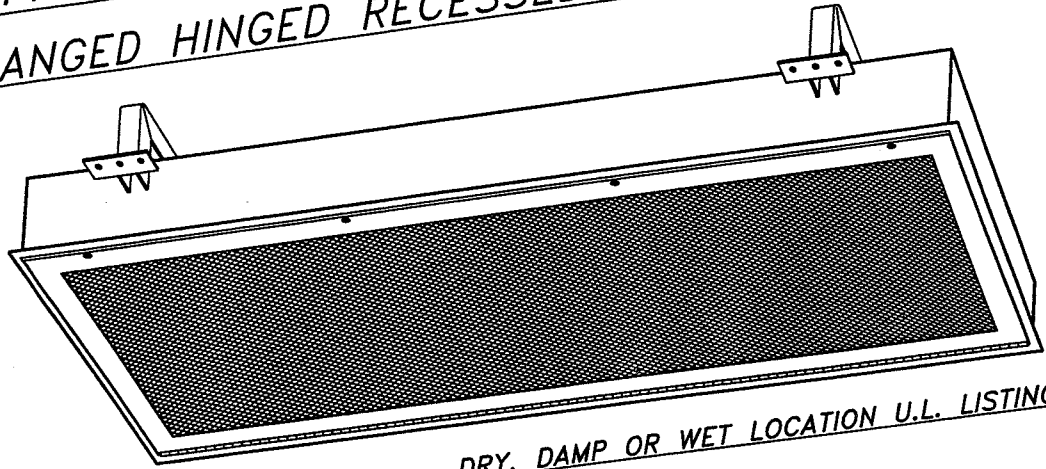
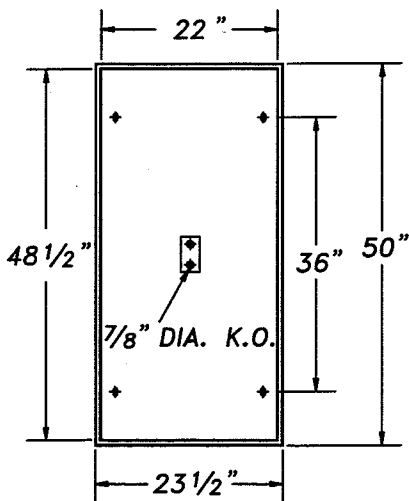
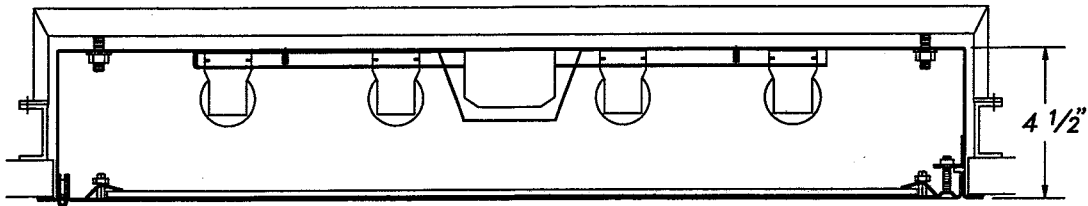


SECURITY / VANDAL RESISTANT

FHG SERIES FLANGED HINGED RECESSED SECURITY LUMINAIRE



DRY, DAMP OR WET LOCATION U.L. LISTING



- ONE PIECE HINGED DOOR WITH WELDED SEAMS.
- ADJUSTABLE HEAVY GAUGE LENS RETAINERS.
- RECESSED TAMPERPROOF FASTENERS.
- UNIVERSAL MOUNTING BRACKET.
- ACCESS PLATE WITH TWO KNOCKOUTS.



THE L.C. DOANE COMPANY DESIGNERS AND MANUFACTURERS OF SPECIALIZED LIGHTING EQUIPMENT
P.O. Box 975 • Essex, CT 06426 • (860) 767-8295 • Fax (860) 767-1397 • Web Site: www.icdoane.com

SECURITY / VANDAL RESISTANT

EXAMPLE: FHG323-NCW-120EL-53/30-APD

FHG												
CHART	1	2	3	4	5	6	7	8	9	10	11	OPTION

CHART #1 LAMPS	
17	17W RS 2' T8
20	20W PH 2' T12
3U	32W RS 2' T8 U-6"
32	32W RS 4' T8
40	40W RS 4' T12
4U	40W RS 2' T12 U-6"
4B	40W RS 2' T5 BIAXIAL

CHART #3 MATERIAL GAGE	
N	18 Ga. MINIMUM SECURITY
D	16 Ga. MEDIUM SECURITY
X	14 Ga. MAXIMUM SECURITY

ADDITIONAL OPTIONS		

CHART #6 VOLTAGE (60 Hz.)		
120	277	347

CHART #4 MATERIAL SPEC.	
C	COLD ROLLED STEEL
S	STAINLESS STEEL

CHART #7 BALLAST	
EL	ELECTRONIC
ES	ENERGY SAVING
DM	DIMMING
LT	LOW TEMPERATURE

CHART #2 LAMP QTY.		
2	3	4
LAMPS NOT INCLUDED		

CHART #5 FINISH	
W	WHITE
R	BRUSHED, STAINLESS ONLY

CHART #8 INTERNAL LENS	
53	.125 ACRYLIC K12 PRISM. (STD)
15	.156 POLYCARB. K12 PRISM.
16	.187 POLYCARB. K12 PRISM.
75	.156 TEMPERED GLASS PRISM.
01	.005 UV ABSORBING OVERLAY

CHART #9 EXTERNAL LENS	
30	.187 POLYCARBONATE (STD)
32	.250 POLYCARBONATE
36	.375 POLYCARBONATE
90	.187 TEMPERED GLASS
92	.250 TEMPERED GLASS

CHART #10 DOOR FASTENERS	
AP	ALLEN HEAD W/PIN, STAINLESS STEEL
TP	TORX HEAD W/PIN, STAINLESS STEEL
PH	PHILLIPS HEAD, NON-SECURITY

OPTIONS	
NL	NIGHT LIGHT, FOR 7 OR 9W PL BI-PIN (NOT INCL.)
E1	ONE LAMP EMERGENCY SERVICE
E2	TWO LAMP EMERGENCY SERVICE
FH	FUSE AND HOLDER
PF	PLASTER MOUNTING FRAME

CHART #11 U.L. LISTING	
D	DAMP & DRY LOCATION
W	WET LOCATION

DIMENSIONS AND SPECIFICATIONS SUBJECT TO CHANGE WITHOUT NOTIFICATION.

MODIFICATIONS ARE AVAILABLE TO SUIT CUSTOM REQUIREMENTS.



THE L.C. DOANE COMPANY DESIGNERS AND MANUFACTURERS OF SPECIALIZED LIGHTING EQUIPMENT
 P.O. Box 975 • Essex, CT 06426 • (860) 767-8295 • Fax (860) 767-1397 • Web Site: www.lcdoane.com