

US NAVY MIL SPEC LIGHTING

MIL-F-16377/7

Overhead Lighting

The L.C. Doane Company
201 Series, 2 Lamp Fixture

The 201 Series is a watertight fluorescent lighting fixture for general lighting. The housing is constructed from marine grade aluminum. Available with a clear and white prismatic 1/4" thick window.

120 volts, 60 Hertz. Supplied with two 8W T5 cool white lamps and ten feet of cable.

Standard Mounting

Overall Dimensions: 17-1/2" X 4-7/8" X 3".

Net weight: 5 lbs. 10 oz. maximum.

Approximate shipping weight for package of eight: 61 lbs.

Flush Mounting

Overall Dimensions: 19-29/32" X 7-1/4" X 3".

Net weight: 6 lbs. 12 oz. maximum.

Approximate shipping weight for package of eight: 78 lbs.

Rail Mounting

Reading and berthing table unit. Clear and white prismatic window, with one DPST toggle switch and two mounting clamp assemblies for rail mounting:

Net weight: 5 lbs. 10 oz. maximum.

Approximate shipping weight for package of eight: 61 lbs.

How To Order By Military Spec Number

Example: M16377/7-70.3 (Refer to the Index pages for crosses to NSN numbers)

M16377/7 - []

MIL SPEC
NUMBER

SYMBOL NUMBER

70.3 = Standard Mount with
White Diffusing Window

70.4 = Flush Mount with White
Diffusing Window

336 = Standard Mount with Clear
and White Prismatic Window

336.1 = Flush Mount with Clear and
White Prismatic Window

78.2 = Rail Mount with Clear and
White Prismatic Window

[] - [] - [] - []

OPTIONAL
(EACH) LAMP
FILTER TUBE

R = Red

B = Blue

Y = Amber

G1.0 = Grey 1.0%

G2.5 = Grey 2.5%

OPTIONAL
SWITCH (DPST)

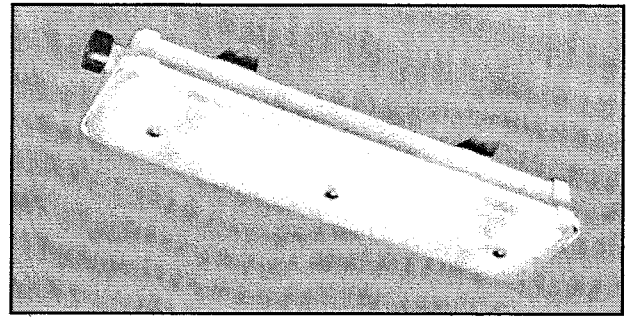
S = One Switch

SS = Two Switches

OTHER OPTION
Specify

A1 = Amendment 1,

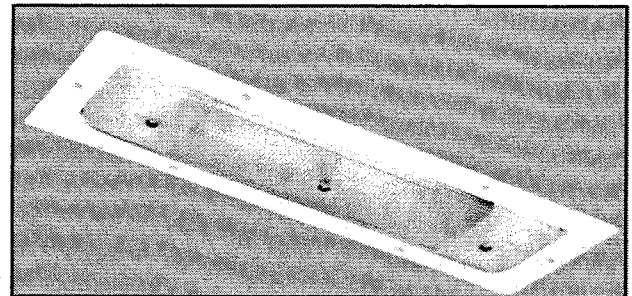
Low Smoke
Cable



M16377/7-70.3

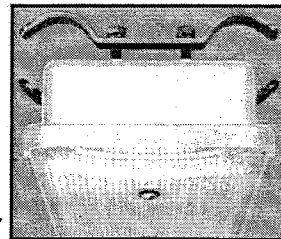
NSN 6210-00-548-0082

Standard Mount, White Diffusing Window



M16377/7-336.1

Flush Mount, Clear and White Prismatic Window



M16377/7-78.2

Rail Mount, Clear and White
Prismatic Window

On Board Repair Parts For MIL-F-16377/7, 2 Lamp Fixtures

For other available on board repair parts refer to the Repair Parts page.

ITEM DESCRIPTION	L.C. DOANE PART NUMBER	MILITARY NUMBER	NSN NUMBER
WHITE DIFFUSING WINDOW	B-1470-NS	M16377/7-001	6210-00-500-0742
CLEAR/WHITE PRISMATIC WINDOW	B-1724-NS	M16377/7-002	
SHOCKMOUNT	B-1591-AS	M16377/41-010	6210-00-973-1748



THE L.C. DOANE COMPANY DESIGNERS AND MANUFACTURERS OF SPECIALIZED LIGHTING EQUIPMENT
 P.O. Box 975 • Essex, CT 06426 • (860) 767-8295 • Fax (860) 767-1397 • Web Site: www.lcdoane.com