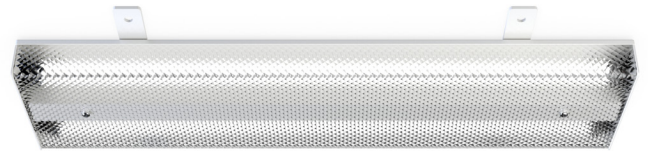


M205 Series Fluorescent Light Fixture

The M205 Series is designed for commercial marine and wet location surface mount ceiling applications. The design is drip-proof and easy to install and service. It's constructed from marine grade aluminum with a prismatic polycarbonate lens.



Housing One piece, low profile aluminum housing with a liquid tight cord grip.

Lamps Two T5 fluorescent lamps secured in position with lamp-locks.

Lens One piece 5/32" prismatic polycarbonate lens.

Lens Retention Two stainless steel lens retaining screws.

Finish White, powder coat polyester, inside and out, phosphate pretreated to ensure superior adhesion and corrosion resistance.

Ballast Standard 120 volt, HPF, class P. Consult factory for other options.

Features

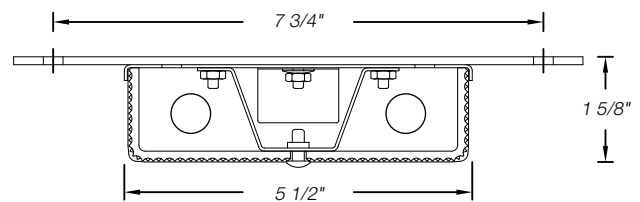
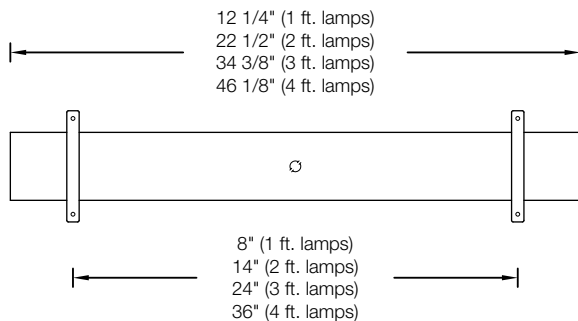
- » 1', 2', 3' or 4' fixture lengths
- » Drip-proof
- » UL 1598A marine
- » IP 55
- » U.S.C.G. - ABS

Applications

- » Narrow places
- » Passageways
- » Work stations

Dimensions *dimensions and specifications subject to change without notification*

Weight: 4 ft. = 6.8 lbs. (3.1 kg)
2 ft. = 4.1 lbs. (1.9 kg)



M205 -

1

1 Lamps

08	<i>8W RS T5 (1 ft)</i>
14	<i>14W RS T5 (2 ft)</i>
21	<i>21W RS T5 (3 ft)</i>
28	<i>28W RS T5 (4 ft)</i>